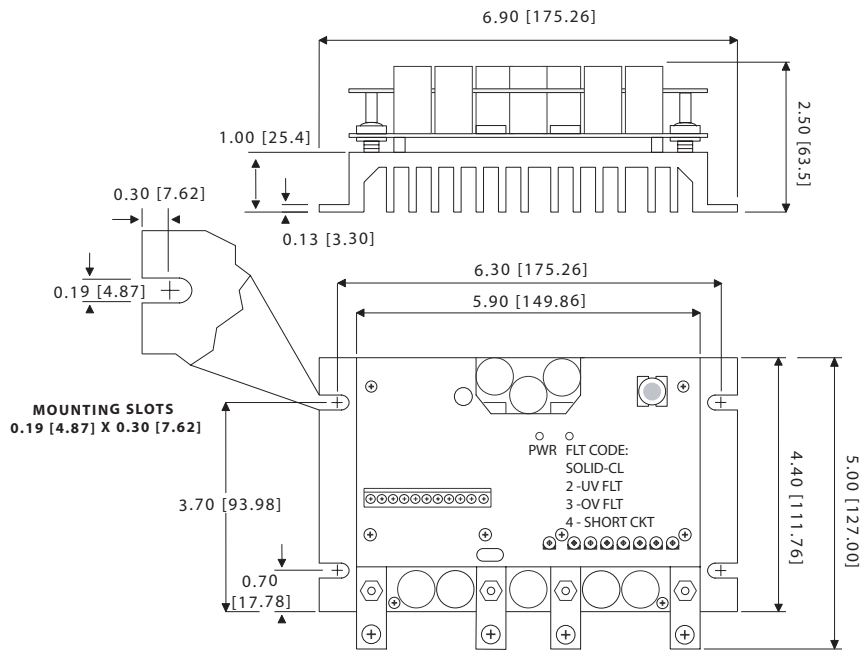


## D I M E N S I O N S



**ALL DIMENSIONS IN INCHES [ MILLIMETERS ]**

## S P E C I F I C A T I O N S

	DC250-12/24-4Q	DC240-36/48-4Q
DC Input Voltage [ V ]	10 - 32	20 - 62
DC Output Voltage [ V ]	0 - 100% of Input	0 - 100% of Input
Continuous Current [ A ]	120*	100**
1 Minute Peak Current [ A ]	250	240
Speed Range	80:1	80:1
Speed Regulation	1%	1%
Ambient Temperature [ °C ]	10 - 40	10 - 40

\* Derate by 15% when mounted horizontally.

\*\* Derate by 20% when mounted horizontally.

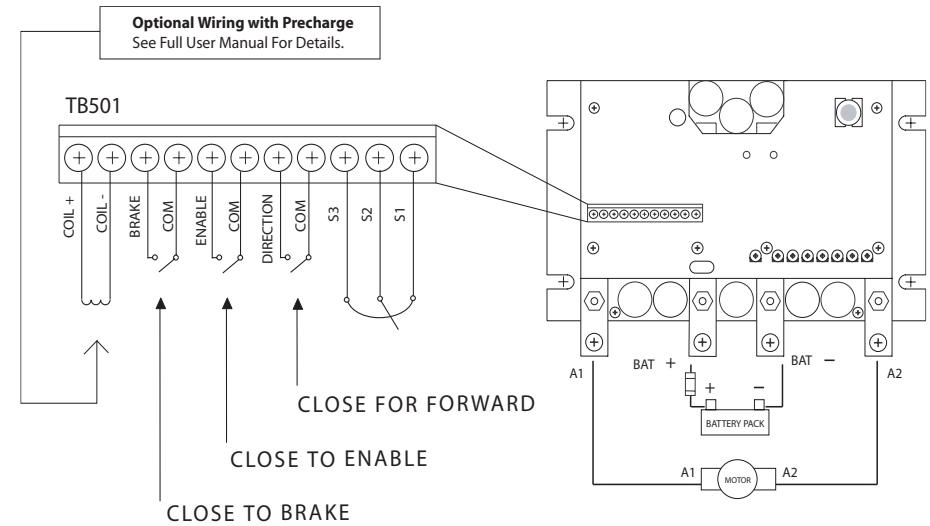


**174298.00**  
**174299.00**

Low Voltage High Current Reversing & Braking DC Drives

## Q U I C K S T A R T G U I D E

### C O N N E C T I O N S



- STEP 1:** Connect speed potentiometer along with optional Brake and Direction switches as shown in above diagram.
- STEP 2:** Connect motor armature across A1 and A2.
- STEP 3:** Connect battery to ( BAT + ) and ( BAT - ), taking note of the polarity. Minarik Drives recommends adding a fuse and master power switch external to the drive.
- STEP 4:** Connect Enable switch or jumper.

#### LED Codes

**Power:** The drive is receiving battery voltage.  
**Fault:**

- Solid: The drive is in Current Limit.
- Two Blinks: The drive is in an Under Voltage Trip.
- Three Blinks: The drive is in an Over Voltage Trip.
- Four Blinks: The drive is in a Short Circuit Trip.
- Five Blinks: The drive is in an Overheat Trip.

**LEESON Electric**

2100 Washington Street • Grafton, WI 53024-0241 U.S.A.  
TEL: (262) 377-8810 • FAX: (262) 377-9025

Printed in the U.S.A. - December 2005 • Document #: 250-0407, Revision 0