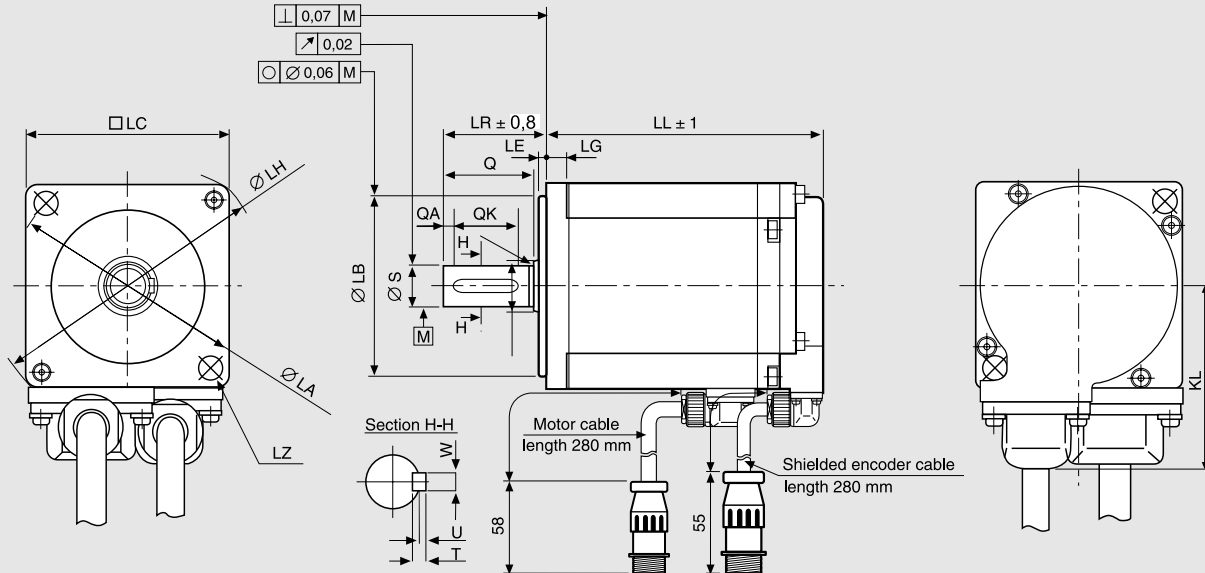


# R2AA04010FXH1CM (R2AA04010FCH1CM6)

**SANYO DENKI  
SANMOTION**

## Dimensions (Unit:mm)



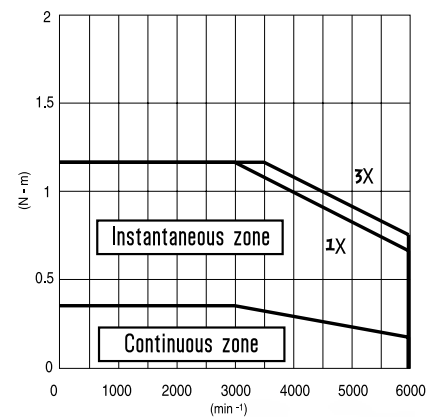
without brake LL	with brake LL	LG	KL	LA	LB	LE	LH	LC	LZ	LR	S	Q	QA	QK	W	T	U	QE	LT
72	108	5	35.4	46	30-0.021 <sup>0</sup>	2.5	56	40	2-Ø4.5	25	8-0.009 <sup>0</sup>	20	2	12	3	3	1.2	--	--

## FEATURES

MODEL	R2AA04010FXH1CM
NOMINAL POWER [version with brake] (W)	100 [90]
NOMINAL SPEED (rpm)	3000
MAXIMUM SPEED (rpm)	6000
NOMINAL TORQUE (Nm)	0.318
STALL TORQUE (Nm)	0.318
MAXIMUM TORQUE (Nm)	1.18
INERTIA (Kg*m <sup>2</sup> )	0.0627×10 <sup>-4</sup>
ENCODER (imp./rev)	131072 (17 bit)
PROTECTION DEGREE	IP67*
WEIGHT [version with brake] (Kg)	0.39 [0.62]

\* Protection degree IP67 (except for the shaft hole and the edge of the cable).

## TORQUE CURVE R2AA04010F [100W] + RS1A01



R.T.A. s.r.l. PAVIA (ITALY) SANYO DENKI CO., Ltd (JAPAN)

WITHOUT BRAKE  
R2AA04010FXH1CM



Indicated performances refer to motor controlled by related RS1 standard amplifiers, RS2 EtherCAT and the new driver RS3.

1X = torque curve with single-phase power supply  
3X = torque curve with three-phase power supply

*Le prestazioni indicate si riferiscono ai motori pilotati con il relativo azionamento Serie R nella versione standard RS1, RS2 EtherCAT e il nuovo driver RS3.*

1X = curva di coppia con alimentazione di potenza monofase  
3X = curva di coppia con alimentazione di potenza trifase

WITH BRAKE  
R2AA04010FCH1CM6

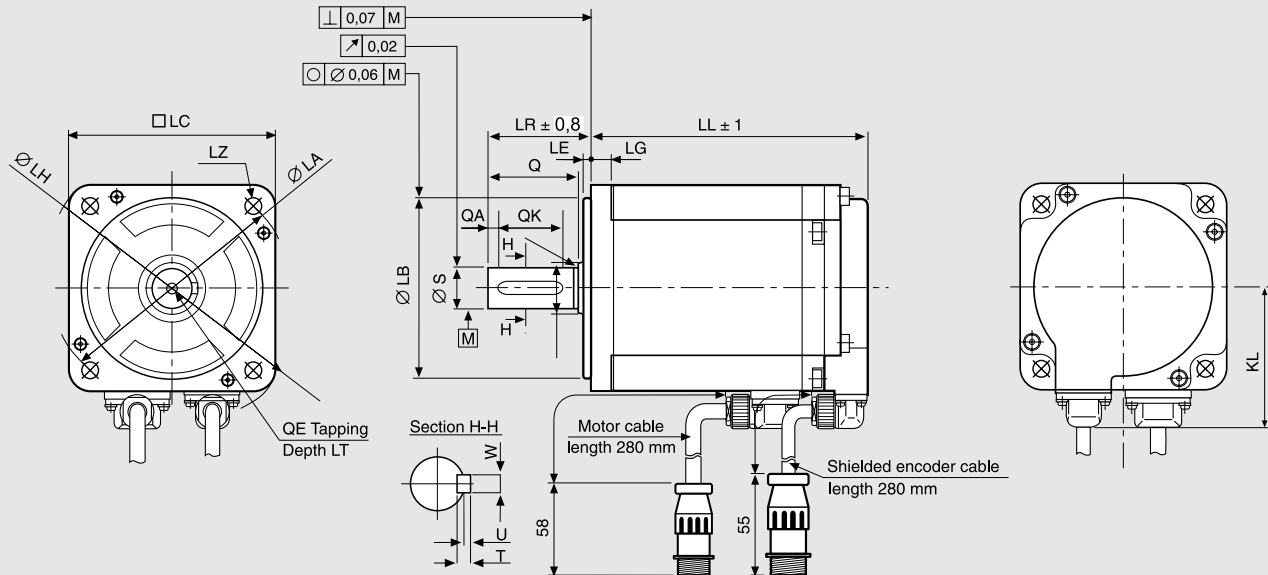


**Suggested amplifiers: RS1A01AA, RS1A01AL, RS2A03A0K, RS3A02A0AL2**

# R2AA06020FXH11M (R2AA06020FCH11M)

**SANYO DENKI**  
**SANMOTION**

## Dimensions (Unit:mm)



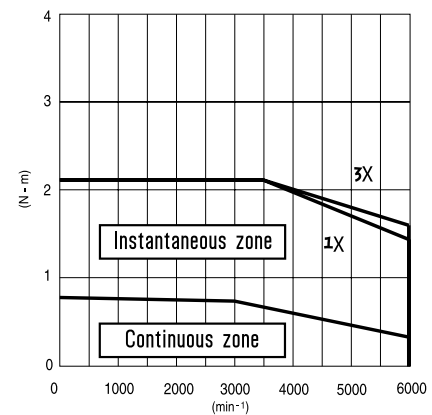
without brake	with brake	LG	KL	LA	LB	LE	LH	LC	LZ	LR	S	Q	QA	QK	W	T	U	QE	LT
LL	LL	6	44.6	70	<sup>0</sup> 50-0.025	3.0	82	60	4- $\varnothing$ 5.5	30	<sup>0</sup> 14-0.011	25	2	20	5	5	2	M5	12

## FEATURES

MODEL	R2AA06020FXH11M
NOMINAL POWER [version with brake] (W)	200
NOMINAL SPEED (rpm)	3000
MAXIMUM SPEED (rpm)	6000
NOMINAL TORQUE (Nm)	0.637
STALL TORQUE (Nm)	0.686
MAXIMUM TORQUE (Nm)	2.20
INERTIA (Kg*m <sup>2</sup> )	0.219*10 <sup>-4</sup>
ENCODER (imp./rev)	131072 (17 bit)
PROTECTION DEGREE	IP67
WEIGHT [version with brake] (Kg)	0.84 [1.19]

\* Protection degree IP67 (except for the shaft hole and the edge of the cable).

## TORQUE CURVE R2AA06020F [200W] + RS1A01



R.T.A. s.r.l. PAVIA (ITALY) SANYO DENKI CO., Ltd (JAPAN)

WITHOUT BRAKE  
R2AA06020FXH11M



Indicated performances refer to motor controlled by related RS1 standard amplifiers, RS2 EtherCAT and the new driver RS3.

1X = torque curve with single-phase power supply  
3X = torque curve with three-phase power supply

*Le prestazioni indicate si riferiscono ai motori pilotati con il relativo azionamento Serie R nella versione standard RS1, RS2 EtherCAT e il nuovo driver RS3.*

1X = curva di coppia con alimentazione di potenza monofase  
3X = curva di coppia con alimentazione di potenza trifase

WITH BRAKE  
R2AA06020FCH11M

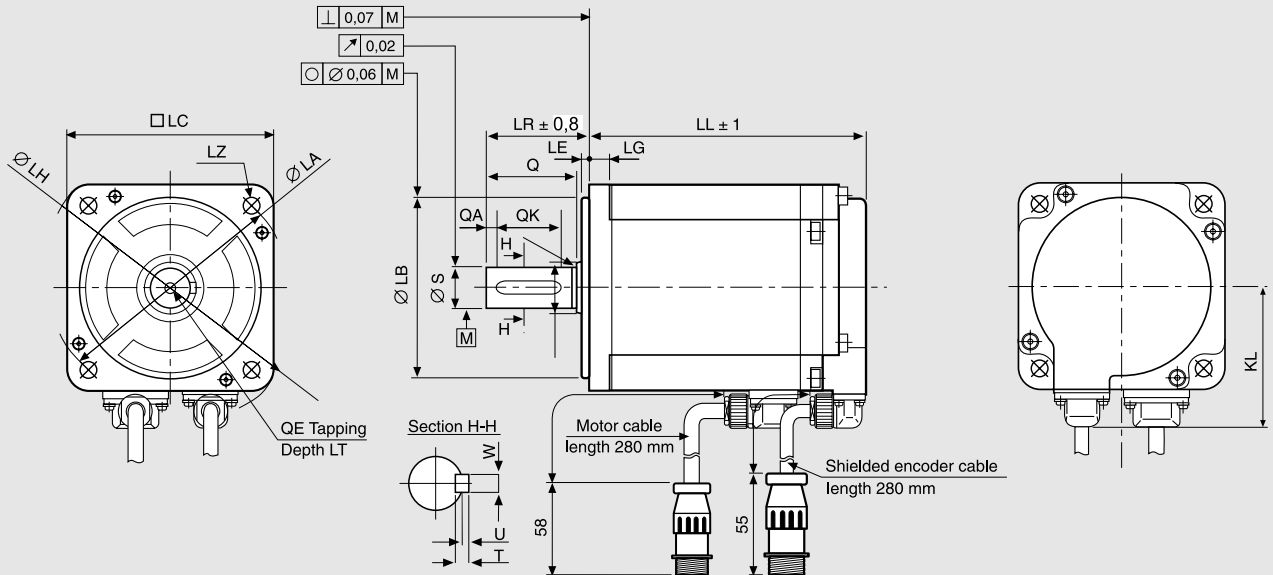


**Suggested amplifiers: RS1A01AA, RS1A01AL, RS2A03A0K, RS3A02A0AL2**

# R2AA06040FXH11M (R2AA06040FCH11M)

**SANYO DENKI**  
**SANMOTION**

## Dimensions (Unit:mm)



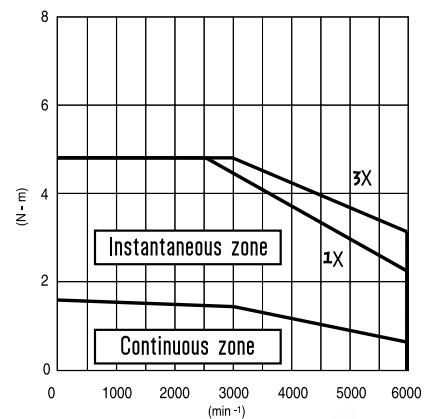
without brake	with brake	LL	LG	KL	LA	LB	LE	LH	LC	LZ	LR	S	Q	QA	QK	W	T	U	QE	LT
95.5	123.5	6	44.6	70	<sup>0</sup> 50-0.025	3.0	82	60	4-Ø5.5	30	<sup>0</sup> 14-0.011	25	2	20	5	5	2	M5	12	

## FEATURES

MODEL	R2AA06040FXH11M
NOMINAL POWER [version with brake] (W)	400 [360]
NOMINAL SPEED (rpm)	3000
MAXIMUM SPEED (rpm)	6000
NOMINAL TORQUE (Nm)	1.270
STALL TORQUE (Nm)	1.370
MAXIMUM TORQUE (Nm)	4.80
INERTIA (Kg*m <sup>2</sup> )	0.412*10 <sup>-4</sup>
ENCODER (imp./rev)	131072 (17 bit)
PROTECTION DEGREE	IP67
WEIGHT [version with brake] (Kg)	1.30 [1.65]

## TORQUE CURVE

R2AA06040F [400W] + RS1A03



\* Protection degree IP67 (except for the shaft hole and the edge of the cable).



Indicated performances refer to motor controlled by related RS1 standard amplifiers, RS2 EtherCAT and the new driver RS3.

1X = torque curve with single-phase power supply  
3X = torque curve with three-phase power supply

*Le prestazioni indicate si riferiscono ai motori pilotati con il relativo azionamento Serie R nella versione standard RS1, RS2 EtherCAT e il nuovo driver RS3.*

1X = curva di coppia con alimentazione di potenza monofase  
3X = curva di coppia con alimentazione di potenza trifase

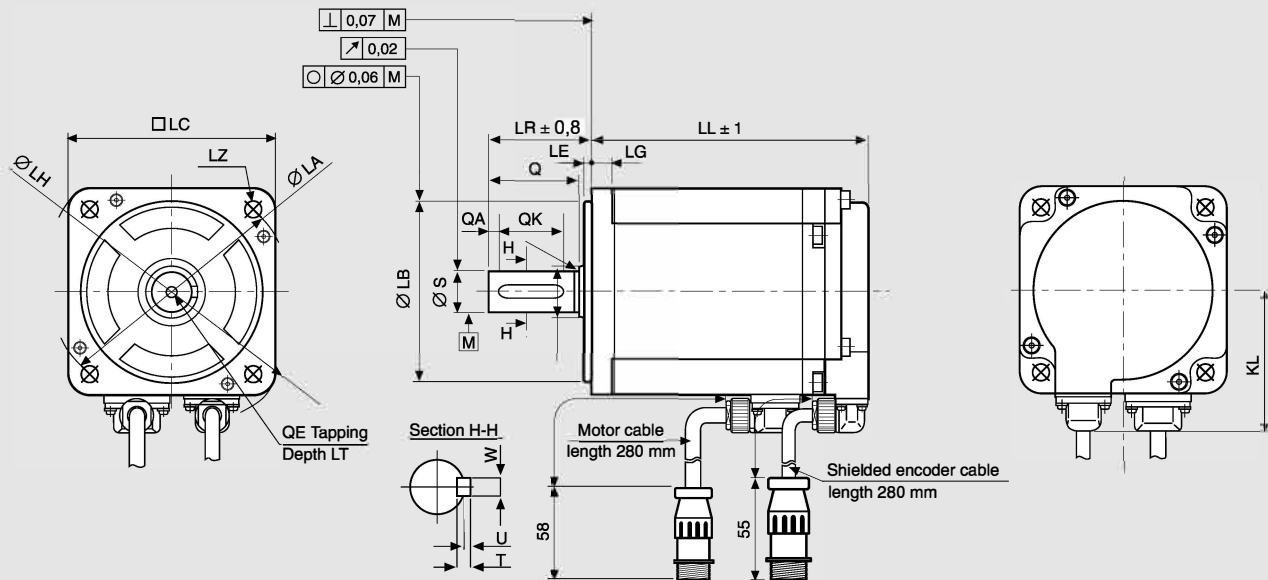


**Suggested amplifiers: RS1A03AA, RS1A03AL, RS2A03AOK, RS3A02A0L2**

# R2AA08075FXH11M (R2AA08075FCH11M)

**SANYO DENKI**  
**SANMOTION**

## Dimensions (Unit:mm)



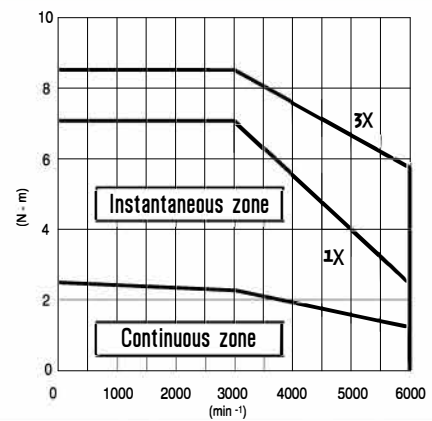
without brake LL	with brake LL	LG	KL	LA	LB	LE	LH	LC	LZ	LR	S	Q	QA	QK	W	T	U	QE	LT
107.3	143	8	54.4	90	$70-0.030^0$	3.0	108	80	4- $\varnothing 6.6$	40	$16-0.011^0$	35	4	25	5	5	2	M5	12

## FEATURES

MODEL	R2AA08075FXH11M	
NOMINAL POWER	(W)	750
NOMINAL SPEED	(rpm)	3000
MAXIMUM SPEED	(rpm)	6000
NOMINAL TORQUE	(Nm)	2.390
STALL TORQUE	(Nm)	2.550
MAXIMUM TORQUE	(Nm)	8.50
INERTIA	(Kg*m <sup>2</sup> )	1.820*10 <sup>-4</sup>
ENCODER	(imp./rev)	131072 (17 bit)
PROTECTION DEGREE		IP67
WEIGHT	[version with brake] (Kg)	2.60 [3.45]

\* Protection degree IP67 (except for the shaft hole and the edge of the cable).

## TORQUE CURVE R2AA08075F [750W] + RS1A03



R.T.A. s.r.l. PAVIA (ITALY) SANYO DENKI CO., Ltd (JAPAN)

WITHOUT BRAKE  
R2AA08075FXH11M



Indicated performances refer to motor controlled by related RS1 standard amplifiers, RS2 EtherCAT and the new driver RS3.

1x = torque curve with single-phase power supply  
3x = torque curve with three-phase power supply

*Le prestazioni indicate si riferiscono ai motori pilotati con il relativo azionamento Serie R nella versione standard RS1, RS2 EtherCAT e il nuovo driver RS3.*

*1x = curva di coppia con alimentazione di potenza monofase  
3x = curva di coppia con alimentazione di potenza trifase*

WITH BRAKE  
R2AA08075FCH11M

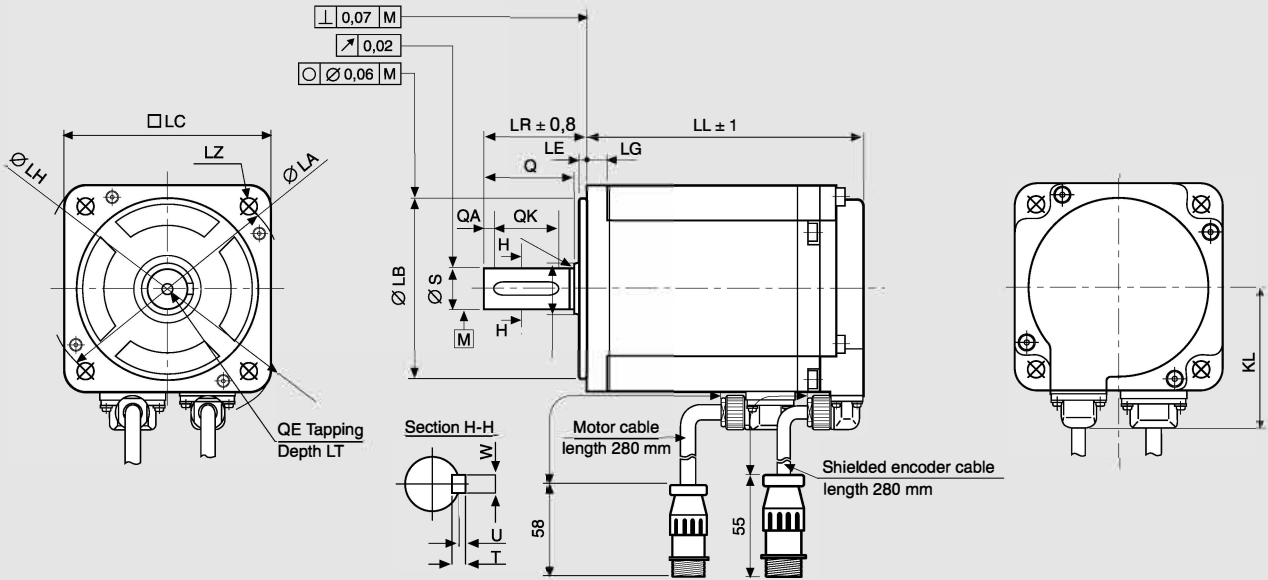


**Suggested amplifiers: RS1A03AA, RS1A03AL, RS2A03A0K, RS3A03A0AL2**

# R2AAB8100HXH29M (R2AAB8100HCH29M)

**SANYODENKI  
SANMOTION**

## Dimensions (Unit:mm)



without brake LL	with brake LL	LG	KL	LA	LB	LE	LH	LC	LZ	LR	S	Q	QA	QK	W	T	U	QE	LT
137	163	8	59.4	100	$80-0.003^0$	3.0	115.5	86	4- $\varnothing 6.6$	35	$16-0.011^0$	30	2	25	5	5	2	M5	12

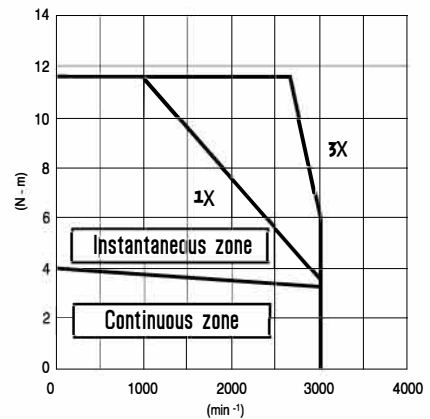
## FEATURES

MODEL	R2AAB8100HXH29M	
NOMINAL POWER	(W)	1000
NOMINAL SPEED	(rpm)	3000
MAXIMUM SPEED	(rpm)	3000
NOMINAL TORQUE	(Nm)	3.180
STALL TORQUE	(Nm)	3.920
MAXIMUM TORQUE	(Nm)	11.60
INERTIA	(Kg*m <sup>2</sup> )	2.383*10 <sup>-4</sup>
ENCODER	(imp./rev)	131072 (17 bit)
PROTECTION DEGREE		IP67*
WEIGHT	[version with brake] (Kg)	3.50 [4.30]

\* Protection degree IP67 (except the edge of the cable).

## TORQUE CURVE

R2AAB8100H [1kw] + RS1A03



R.T.A. s.r.l. PAVIA (ITALY) SANYO DENKI CO., Ltd (JAPAN)

WITHOUT BRAKE  
R2AAB8100HXH29M



Indicated performances refer to motor controlled by related RS1 standard amplifiers, RS2 EtherCAT and the new driver RS3.

1 $\chi$  = torque curve with single-phase power supply  
3 $\chi$  = torque curve with three-phase power supply

*Le prestazioni indicate si riferiscono ai motori pilotati con il relativo azionamento Serie R nella versione standard RS1, RS2 EtherCAT e il nuovo driver RS3.*

*1 $\chi$  = curva di coppia con alimentazione di potenza monofase  
3 $\chi$  = curva di coppia con alimentazione di potenza trifase*

WITH BRAKE  
R2AAB8100HCH29M



**Suggested amplifiers: RS1A03AA, RS1A03AL, RS2A03A0K, RS3A03A0AL2**