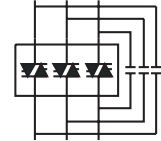
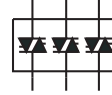
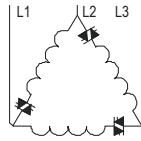
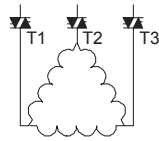


X FE Utvalgsdata



| Applikasjon | Trip-klasse |
|-------------------------|-------------|
| Standard | 10 |
| Tung drift | 20 |
| Dreiebenk | 10B |
| Hogger flis | 30 |
| Kjøler | 10B |
| Kompressor ubelastet | 10B |
| Kompressor belastet | 10 |
| Mater skruve ubelastet | 10 |
| Mater skruve belastet | 30 |
| Mikser lett | 10B |
| Mikser tung | 20 |
| Mølle hammer | 20 |
| Mølle kule | 20 |
| Pelleteringsmaskin | 20 |
| Plastmaskin | 10B |
| Presse svinghjul | 20 |
| Pumpe sentrifugal | 10B |
| Pumpe skruve ubelastet | 10 |
| Rulletrapp | 10B |
| Røreverk | 10 |
| Sentrifuge | 30 |
| Transportband lett | 10B |
| Transportband tung | 20 |
| Slipemaskin | 20 |
| Steinknuser | 30 |
| Sag band | 10 |
| Sag sirkel | 20 |
| Sikt vibrasjon | 20 |
| Valseverk | 20 |
| Vifte liten masse <45kW | 10 |
| Vifte stor masse >45kW | 30 |
| Transformator | 10B |
| Trommel ubelastet | 10 |

| InLine | | | In Delta | | | Kontinuerlig drift AC53a | | | | Bypass AC53b | | | |
|-------------|----------------|----------------|-------------|---------|---------|-----------------------------|--------------------------|--------------------------|--------------------------|---------------------------|------------------------|------------------------|------------------------|
| le (A) 400V | Inline KW 400V | Inline HP 460V | Motor Strøm | KW 400V | HP 460V | Trip-klasse 10B 3.5-12:XX-X | Trip-klasse 10 3-23:XX-X | Trip-klasse 20 4-19:XX-X | Trip-klasse 30 4-29:XX-X | Trip-klasse 10B 3.5-12:XX | Trip-klasse 10 3-23:XX | Trip-klasse 20 4-19:XX | Trip-klasse 30 4-29:XX |
| 4.9 A | 2.2 KW | 3 HP | 8 A | 3 KW | 5 HP | XFE104-1 | XFE104-2 | XFE104-3 | XFE104-4 | XFE102-5 | XFE104-6 | XFE104-7 | XFE104-8 |
| 6.5 A | 3 KW | 4 HP | 11 A | 5 KW | 6 HP | XFE106-1 | XFE106-2 | XFE106-3 | XFE106-4 | XFE104-5 | XFE104-6 | XFE104-7 | XFE106-8 |
| 11.5 A | 5.5 KW | 7.5 HP | 19 A | 9 KW | 12 HP | XFE108-1 | XFE108-2 | XFE110-3 | XFE110-4 | XFE106-5 | XFE106-6 | XFE108-7 | XFE110-8 |
| 15.5 A | 7.5 KW | 10 HP | 26 A | 12 KW | 17 HP | XFE110-1 | XFE110-2 | XFE110-3 | XFE110-4 | XFE108-5 | XFE108-6 | XFE110-7 | XFE110-8 |
| 22 A | 11 KW | 15 HP | 38 A | 19 KW | 25 HP | XFE112-1 | XFE112-2 | XFE112-3 | XFE114-4 | XFE110-5 | XFE110-6 | XFE112-7 | XFE112-8 |
| 29 A | 15 KW | 20 HP | 50 A | 25 KW | 34 HP | XFE116-1 | XFE116-2 | XFE116-3 | XFE116-4 | XFE112-5 | XFE112-6 | XFE114-7 | XFE114-8 |
| 35 A | 19 KW | 25 HP | 60 A | 32 KW | 43 HP | XFE118-1 | XFE118-2 | XFE120-3 | XFE122-4 | XFE114-5 | XFE114-6 | XFE116-7 | XFE116-8 |
| 41 A | 22 KW | 30 HP | 71 A | 38 KW | 51 HP | XFE120-1 | XFE120-2 | XFE122-3 | XFE122-4 | XFE116-5 | XFE116-6 | XFE122-7 | XFE122-8 |
| 55 A | 30 KW | 42 HP | 95 A | 51 KW | 72 HP | XFE124-1 | XFE124-2 | XFE124-3 | XFE126-4 | XFE122-5 | XFE122-6 | XFE122-7 | XFE124-8 |
| 66 A | 37 KW | 54 HP | 114 A | 64 KW | 93 HP | XFE126-1 | XFE126-2 | XFE128-3 | XFE130-4 | XFE124-5 | XFE122-6 | XFE124-7 | XFE128-8 |
| 80 A | 45 KW | 60 HP | 138 A | 77 KW | 103 HP | XFE130-1 | XFE128-2 | XFE132-3 | XFE132-4 | XFE124-5 | XFE124-6 | XFE130-7 | XFE132-8 |
| 97 A | 55 KW | 75 HP | 168 A | 95 KW | 129 HP | XFE132-1 | XFE130-2 | XFE134-3 | XFE136-4 | XFE132-5 | XFE130-6 | XFE134-7 | XFE134-8 |
| 132 A | 75 KW | 106 HP | 228 A | 129 KW | 183 HP | XFE136-1 | XFE136-2 | XFE140-3 | XFE140-4 | XFE136-5 | XFE134-6 | XFE138-7 | XFE138-8 |
| 160 A | 90 KW | 150 HP | 277 A | 155 KW | 259 HP | XFE140-1 | XFE138-2 | XFE202-3 | XFE202-4 | XFE138-5 | XFE136-6 | XFE140-7 | XFE202-8 |
| 195 A | 110 KW | 175 HP | 337 A | 190 KW | 303 HP | XFE202-1 | XFE202-2 | XFE204-3 | XFE206-4 | XFE140-5 | XFE140-6 | XFE204-7 | XFE204-8 |
| 230 A | 132 KW | 200 HP | 398 A | 228 KW | 346 HP | XFE204-1 | XFE204-2 | XFE206-3 | XFE208-4 | XFE204-5 | XFE202-6 | XFE206-7 | XFE206-8 |
| 280 A | 160 KW | 250 HP | 484 A | 277 KW | 433 HP | XFE206-1 | XFE206-2 | XFE212-3 | XFE212-4 | XFE206-5 | XFE206-6 | XFE210-7 | XFE212-8 |
| 350 A | 200 KW | 270 HP | 606 A | 346 KW | 467 HP | XFE208-1 | XFE210-2 | XFE302-3 | XFE302-4 | XFE208-5 | XFE210-6 | XFE302-7 | XFE302-8 |
| 382 A | 220 KW | 300 HP | 661 A | 381 KW | 519 HP | XFE212-1 | XFE212-2 | XFE302-3 | XFE302-4 | XFE210-5 | XFE212-6 | XFE302-7 | XFE302-8 |
| 430 A | 250 KW | 320 HP | 744 A | 433 KW | 554 HP | XFE212-1 | XFE302-2 | XFE302-3 | XFE306-4 | XFE212-5 | XFE212-6 | XFE302-7 | XFE302-8 |
| 540 A | 315 KW | 375 HP | 935 A | 545 KW | 649 HP | XFE304-1 | XFE306-2 | XFE308-3 | XFE310-4 | XFE304-5 | XFE304-6 | XFE308-7 | XFE308-8 |
| 610 A | 355 KW | 470 HP | 1056 A | 614 KW | 814 HP | XFE306-1 | XFE306-2 | XFE310-3 | XFE312-4 | XFE306-5 | XFE306-6 | XFE308-7 | XFE312-8 |
| 690 A | 400 KW | 540 HP | 1195 A | 692 KW | 935 HP | XFE308-1 | XFE308-2 | XFE312-3 | XFE314-4 | XFE308-5 | XFE308-6 | XFE308-7 | XFE312-8 |
| 850 A | 500 KW | 670 HP | 1472 A | 866 KW | 1160 HP | XFE312-1 | XFE312-2 | XFE316-3 | XFE318-4 | XFE312-5 | XFE312-6 | XFE314-7 | XFE314-8 |
| 950 A | 560 KW | 750 HP | 1645 A | 969 KW | 1299 HP | XFE314-1 | XFE314-2 | XFE318-3 | XFE322-4 | XFE314-5 | XFE314-6 | XFE316-7 | XFE320-8 |
| 1060 A | 630 KW | 820 HP | 1835 A | 1091 KW | 1420 HP | XFE316-1 | XFE316-2 | XFE322-3 | XFE326-4 | XFE316-5 | XFE316-6 | XFE320-7 | XFE324-8 |
| 1190 A | 710 KW | 900 HP | 2061 A | 1229 KW | 1558 HP | XFE320-1 | XFE320-2 | XFE324-3 | XFE326-4 | XFE318-5 | XFE318-6 | XFE324-7 | XFE326-8 |
| 1346 A | 800 KW | 1000 HP | 2331 A | 1385 KW | 1732 HP | XFE322-1 | XFE322-2 | XFE326-3 | Call | XFE320-5 | XFE320-6 | XFE326-7 | Call |
| 1518 A | 900 KW | 1200 HP | 2629 A | 1558 KW | 2078 HP | XFE324-1 | XFE324-2 | Call | Call | XFE324-5 | XFE324-6 | XFE326-7 | Call |
| 1673 A | 1000 KW | 1300 HP | 2897 A | 1732 KW | 2251 HP | XFE326-1 | XFE326-2 | Call | Call | XFE326-5 | XFE326-6 | Call | Call |