

### Drive selection planetary gearbox SPL□□-□NVCR

Gearbox type	Ratio	M max.	Axial load max.	Radial load max.	Selection (tick as required)
	i	Nm	N	N	
SPL42-1NVCR	3.7	3	50	160	
	6.75	3	50	160	
SPL42-2NVCR	13.73	7.5	80	230	
	25.01	7.5	80	230	
	45.56	7.5	80	230	
SPL42-3NVCR	50.89	15	110	300	
	92.7	15	110	300	
	168.84	15	110	300	

Gearbox type	Ratio	M max.	Axial load max.	Radial load max.	Selection (tick as required)
	i	Nm	N	N	
SPL52-1NVCR	3.7	4	60	200	
	6.75	4	60	200	
SPL52-2NVCR	13.73	12	100	320	
	25.01	12	100	320	
	45.56	12	100	320	
SPL52-3NVCR	50.89	25	150	450	
	92.7	25	150	450	
	168.84	25	150	450	

Gearbox type	Ratio	M max.	Axial load max.	Radial load max.	Selection (tick as required)
	i	Nm	N	N	
SPL62-1NVCR	3.7	8	50	240	
	6.75	8	50	240	
SPL62-2NVCR	13.73	25	70	360	
	25.01	25	70	360	
	34.97	25	70	360	
	45.56	25	70	360	
SPL62-3NVCR	50.89	50	120	520	
	71.06	50	120	520	
	99.5	50	120	520	
	123.97	50	120	520	

Gearbox type	Ratio	M max.	Axial load max.	Radial load max.	Selection (tick as required)
	i	Nm	N	N	
SPL81-1NVCR	3.7	20	80	400	
	6.75	20	80	400	
SPL81-2NVCR	13.73	60	120	600	
	25.01	60	120	600	
	34.97	60	120	600	
	45.56	60	120	600	
SPL81-3NVCR	50.89	120	200	1000	
	71.06	120	200	1000	
	99.5	120	200	1000	
	123.97	120	200	1000	

Gearbox type	Ratio	M max.	Axial load max.	Radial load max.	Selection (tick as required)
	i	Nm	N	N	
SPL12-1NVCR	3.7	50	120	600	
	6.75	50	120	600	
SPL12-2NVCR	13.73	150	180	900	
	25.01	150	180	900	
	45.56	150	180	900	
SPL12-3NVCR	50.89	300	300	1500	
	92.7	300	300	1500	
	168.84	300	300	1500	

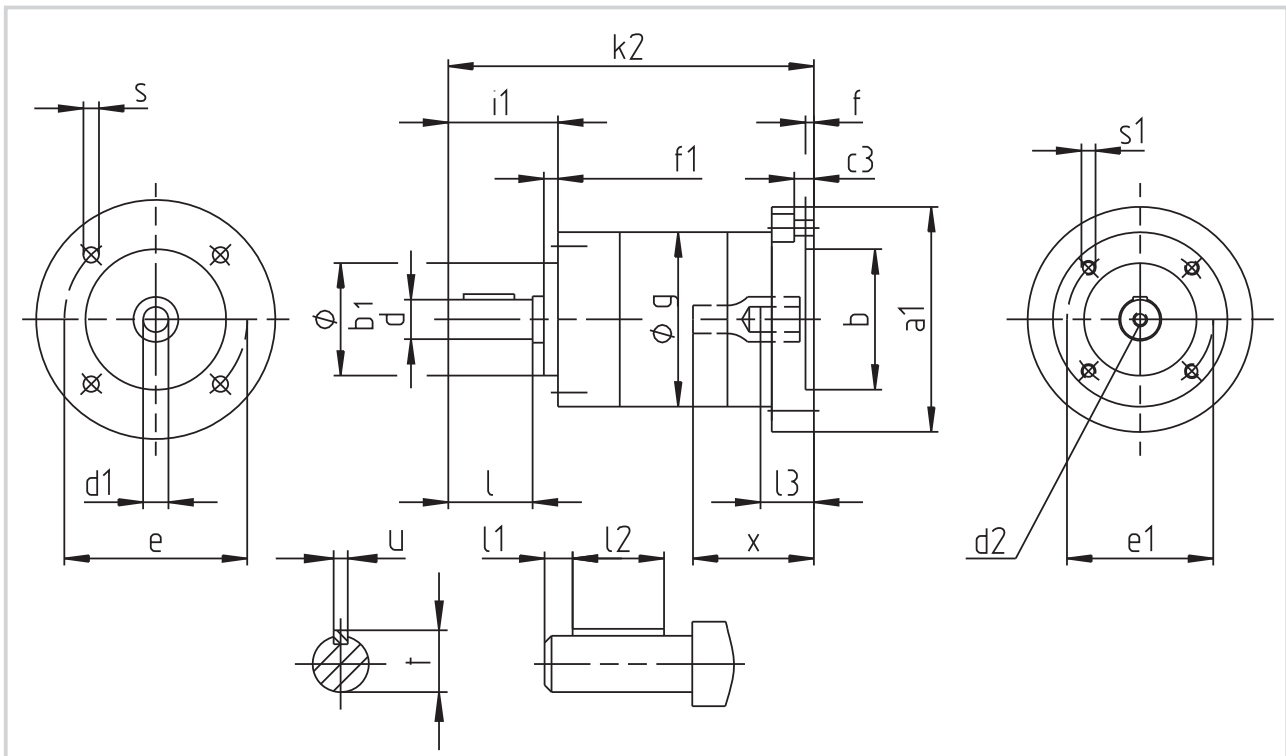
At the drive end motor attachment		
Gearbox type	Design	Selection
SPL42	B14-SPL42	
SPL52	IEC56B14C80	
SPL62	IEC56B14C80	
SPL62	IEC63B14C90	
SPL81	IEC63B14C90	
SPL81	IEC71B14C105	
SPL12	IEC71B14C105	

Efficiency	
1-stage	0.8
2-stage	0.75
3-stage	0.7





## Dimensions Type SPL



Gearbox	Stage	$a_1$	$b$ H8 H7	$b_1$ h10	$c_3$	$d$ g6	$d_1$ H7	$d_2$	$e$	$e_1$	$f$	$f_1$	$g$	$i_1$	$k_2$	$l$	$l_1$	$l_2$	$l_3$ min.	$s$	$s_1$	$t$	$u$	$x$ max.	Wt. appr. kg
SPL42-□NVCR	1													84											0.4
	2	52	28	25	5	8	6	M3	40	32	3	2	42	25	97	22.2	3	16	14	4.5	M4	9.2	3	31	0.5
	3					h7								110							x10				0.7
SPL52-□NVCR-IEC56B14C80	1													99											1.0
	2	80	50	32	10	12	9	M4	65	40	3	3	52	25	113	20.8	2.5	16	20	5.5	M5	13.5	4	38.6	1.2
	3			h8		h7								127							x10				1.4
SPL62-□NVCR-IEC56B14C80	1													115											0.9
	2	80	50	40	7	14	9	M5	65	52	3	5	62	39	131	30	5.5	18	20	5.5	M4	16	5	43	1.3
	3			j7		h7								147							x10				1.7
SPL62-□NVCR-IEC63B14C90	1													115											0.9
	2	90	60	40	7	14	11	M5	75	52	3	5	62	39	131	30	5.5	18	23	5.5	M5	16	5	43	1.3
	3			j7		h7								147							x10				1.7
SPL81-□NVCR-IEC63B14C90	1													144											2.0
	2	90	60	50	9	19	11	M6	75	65	3	5	81	49	165	40	6	28	23	5.3	M6	21.5	6	51.6	2.8
	3			j7		h7								187							x12				3.5
SPL81-□NVCR-IEC71B14C105	1													151											2.0
	2	105	70	50	9	19	14	M6	85	65	3	5	81	49	173	40	6	28	30	6.3	M6	21.5	6	58.6	2.8
	3			j7		h7								195							x12				3.5
SPL12-□NVCR-IEC71B14C105	1													108											5.6
	2	120	70	80	15	32	14	M12	85	100	3	5	120	73	242	58	4	50	30	6.4	M10	35	10	73.7	8.0
	3			j7		k6								276							x22				10.4

Dimensions in mm