

T3A Series

ELECTRICAL AND MECHANICAL DATA



ALLUMINUM CASING

33. TA SERIES - Three-Phase Asynchronous single speed motors

Electrical data (50Hz) Efficiency IE3 - 2 poles

Frame size	Power(Kw)	rpm (rpm/min)	Current In(A) 400V	Eff. (%)	Power factor (cosφ)	Torque Cn (Nm)	Is/In	Cs/Cn	Cmin./Cn	Cmax/Cn
T3A 801-2	0.75	2848	1.79	80.7	0.75	2.51	6	2.7	2.1	2.8
T3A 802-2	1.1	2846	2.43	82.7	0.79	3.69	6.7	2.7	2.1	2.9
T3A 90S-2	1.5	2852	3.06	84.2	0.84	5.02	6.1	2.3	2	2.7
T3A 90L-2	2.2	2845	4.40	85.9	0.84	7.38	7	2.6	2.1	2.7
T3A 100L-2	3	2851	5.59	87.1	0.89	10.05	7.6	2.5	2	2.8
T3A 112M-2	4	2910	7.36	88.1	0.89	13.13	7.8	2.5	2	2.7
T3A 132S1-2	5.5	2905	10.00	89.2	0.89	18.08	7.8	2.4	2	2.9
T3A 132S2-2	7.5	2910	13.65	90.1	0.88	24.61	7.9	2.7	2	2.8
T3A 160M1-2	11	2920	19.34	91.2	0.90	35.97	7.9	2.2	2.1	3
T3A 160M2-2	15	2918	25.89	91.9	0.91	49.09	7.9	2.3	2.1	3
T3A 160L-2	18.5	2922	31.41	92.4	0.92	60.46	8	2.4	2.1	2.9
T3A 180M-2	22	2930	38.49	92.7	0.89	71.70	7.5	2.3	2	2.8
T3A 200L1-2	30	2925	52.74	93.3	0.88	97.94	6.7	2.4	2	2.7
T3A 200L2-2	37	2930	63.33	93.7	0.90	120.59	6,3	2.3	2	2.7

Electrical data (50Hz) Efficiency IE3 - 4 poles

Frame size	Power(Kw)	rpm (rpm/min)	Current In(A) 400V	Eff. (%)	Power factor (cosφ)	Torque Cn (Nm)	Is/In	Cs/Cn	Cmin./Cn	Cmax/Cn
T3A 802-4	0.75	1420	1.73	82.5	0.76	5.04	5.4	2.3	2.1	2.9
T3A 90S-4	1.1	1425	2.42	84.1	0.78	7.37	5.9	2.3	2.1	2.7
T3A 90L-4	1.5	1420	3.21	85.3	0.79	10.09	6.4	2.4	2	2.7
T3A 100L1-4	2.2	1430	4.47	86.7	0.82	14.69	6.6	2.4	2.1	2.9
T3A 100L2-4	3	1430	6.17	87.7	0.80	20.03	6.9	2.4	2	2.8
T3A 112M-4	4	1435	8.25	88.6	0.79	26.62	7.9	2.5	2	3
T3A 132S-4	5.5	1430	10.81	89.6	0.82	36.73	7.1	2.3	2	2.8
T3A 132M-4	7.5	1430	14.43	90.4	0.83	50.08	7.8	2.3	2	2.7
T3A 160M-4	11	1440	19.09	91.4	0.91	72.95	7.9	2.5	2.1	2.8
T3A 160L-4	15	1445	25.55	92.1	0.92	99.13	7.8	2.4	2.1	2.9
T3A 180M-4	18.5	1445	33.15	92.6	0.87	122.26	7.8	2.4	2.1	3
T3A 180L-4	22	1460	38.37	93	0.89	143.89	7.5	2.3	2	3
T3A 200L-4	30	1460	52.57	93.6	0.88	196.22	7.9	2.4	2	2.7

Electrical data (50Hz) Efficiency IE3 - 6 poles

Frame size	Power(Kw)	rpm (rpm/min)	Current In(A) 400V	Eff. (%)	Power factor (cosφ)	Torque Cn (Nm)	Is/In	Cs/Cn	Cmin./Cn	Cmax/Cn
T3A 90S-6	0.75	935	1.81	78.9	0.76	7.66	6.2	2.2	2	2
T3A 90L-6	1.1	935	2.45	81	0.80	11.23	6	2.3	2.1	2.1
T3A 100L-6	1.5	940	3.20	82.5	0.82	15.24	5.8	2.3	2.1	2.1
T3A 112M-6	2.2	940	4.71	84.3	0.80	22.35	6.4	2.3	2.1	2.1
T3A 132S-6	3	940	6.09	85.6	0.83	30.48	6.3	2.4	2.2	2.2
T3A 132M1-6	4	945	7.92	86.8	0.84	40.42	6.2	2.5	2	2
T3A 132M2-6	5.5	945	11.00	88	0.82	55.58	6.8	2.3	1.9	1.9
T3A 160M-6	7.5	955	14.46	89.1	0.84	74.99	7	2.4	1.9	1.9
T3A 160L-6	11	960	20.69	90.3	0.85	109.42	7.3	2.5	2	2
T3A 180L-6	15	960	28.60	91.2	0.83	149.21	7.8	2.3	2.1	2.1
T3A 200L1-6	18.5	965	34.26	91.7	0.85	183.07	7.8	2.4	2.1	2.1
T3A 200L2-6	22	965	40.05	92.2	0.86	217.70	7.9	2.3	1.9	1.9

36. TA SERIES - Weight TA IE3

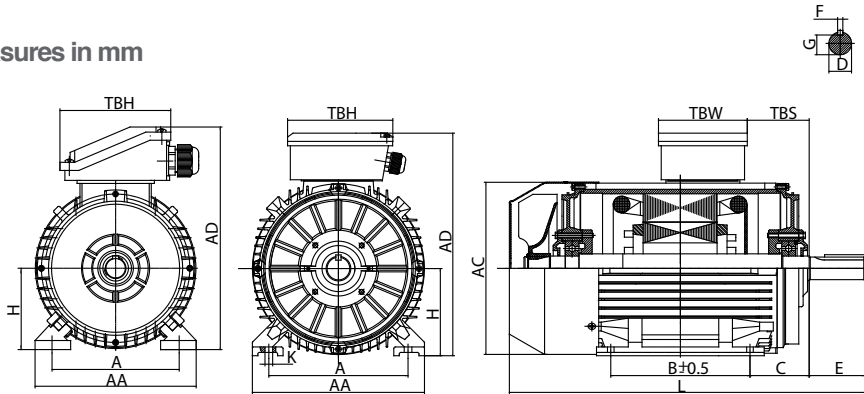
Frame size	Kw	Weight kg				
		B3	B14	B5	B34	B35
801-2	0,75	8,75	8,75	8,00	8,00	8,32
802-2	1,1	10,55	10,55	10,30	10,30	10,71
90S-2	1,5	13,95	13,95	13,60	13,60	14,14
90L-2	2,2	16,25	16,25	15,40	15,40	16,02
100L-2	3	23,90	23,90	24,00	24,00	26,15
112M-2	4	30,15	30,15	30,85	30,85	32,08
132S1-2	5,5	43,50	43,50	43,80	43,80	45,55
132S2-2	7,5	52,80	52,80	52,00	52,00	52,35
160M1-2	11	85,50	85,50	85,70	85,70	87,40
160M2-2	15	104,00	104,00	104,00	104,00	106,00
160L-2	18,5	121,00	121,00	121,00	121,00	124,00
180M-2	22	130,60		133,00		136,20
200L1-2	30	158,00		160,60		163,20
200L2-2	37	173,10		175,70		178,90

Frame size	Kw	Weight kg				
		B3	B14	B5	B34	B35
802-4	0,75	11,65	11,65	11,85	11,85	12,32
90S-4	1,1	15,15	15,15	15,25	15,25	15,86
90L-4	1,5	17,95	17,95	18,05	18,05	18,77
100L1-4	2,2	23,70	23,70	23,00	23,00	23,92
100L2-4	3	28,30	28,30	27,20	27,20	28,29
112M-4	4	33,80	33,80	30,10	30,10	31,30
132S-4	5,5	47,40	47,40	47,30	47,30	49,19
132M-4	7,5	58,20	58,20	58,20	58,20	60,53
160M-4	11	88,80	88,80	88,80	88,80	82,60
160L-4	15	111,20	111,20	110,50	110,50	98,80
180M-4	18,5	121,00		124,00		135,70
180L-4	22	129,00		134,50		136,70
200L-4	30	170,00		159,70		161,40

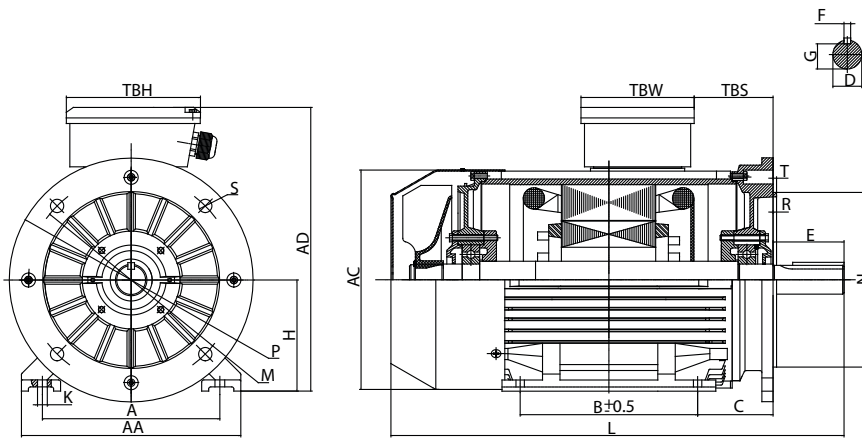
Frame size	Kw	Weight kg				
		B3	B14	B5	B34	B35
90S-6	0,75	14,00	14,00	14,10	14,10	14,66
90L-6	1,1	17,40	17,40	17,80	17,80	18,51
100L-6	1,5	22,00	22,00	22,20	22,20	23,09
112M-6	2,2	29,00	28,60	27,00	27,00	28,08
132S-6	3	36,40	36,40	39,40	39,40	40,98
132M1-6	4	47,80	47,80	47,50	47,50	49,40
132M2-6	5,5	54,80	54,80	55,60	55,60	57,82
160M-6	7,5	80,90	80,90	80,40	80,40	83,80
160L-6	11	94,30	94,30	98,10	98,10	101,20
180L-6	15	125,20		128,40		131,10
200L1-6	18,5	143,00		147,00		151,00
200L2-6	22	162,00		163,80		166,80

37. TA SERIES - Overall and installation dimensions

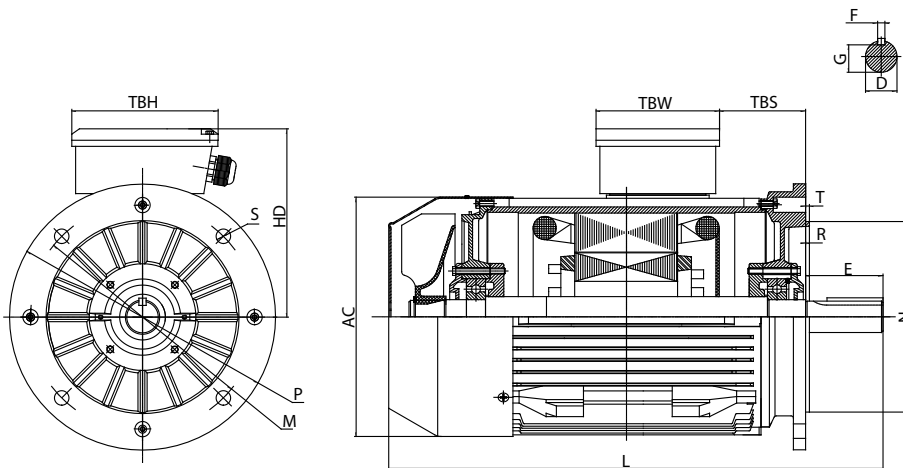
Measures in mm



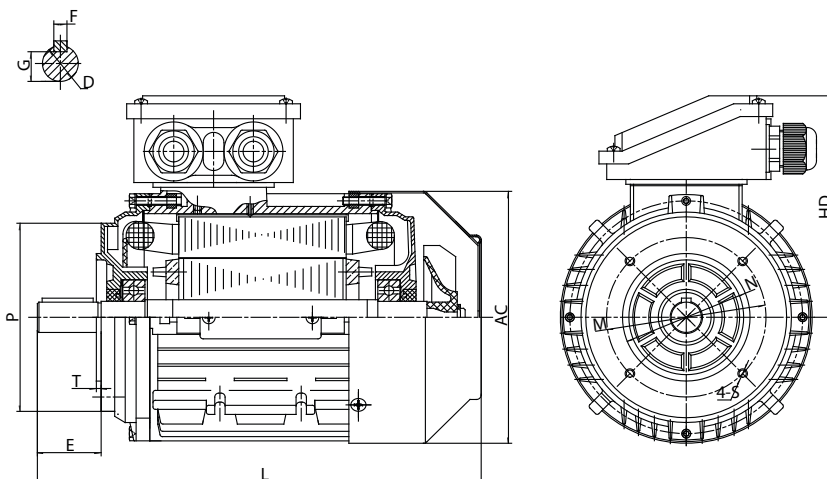
IM B3



IM B3/B5



IM B5



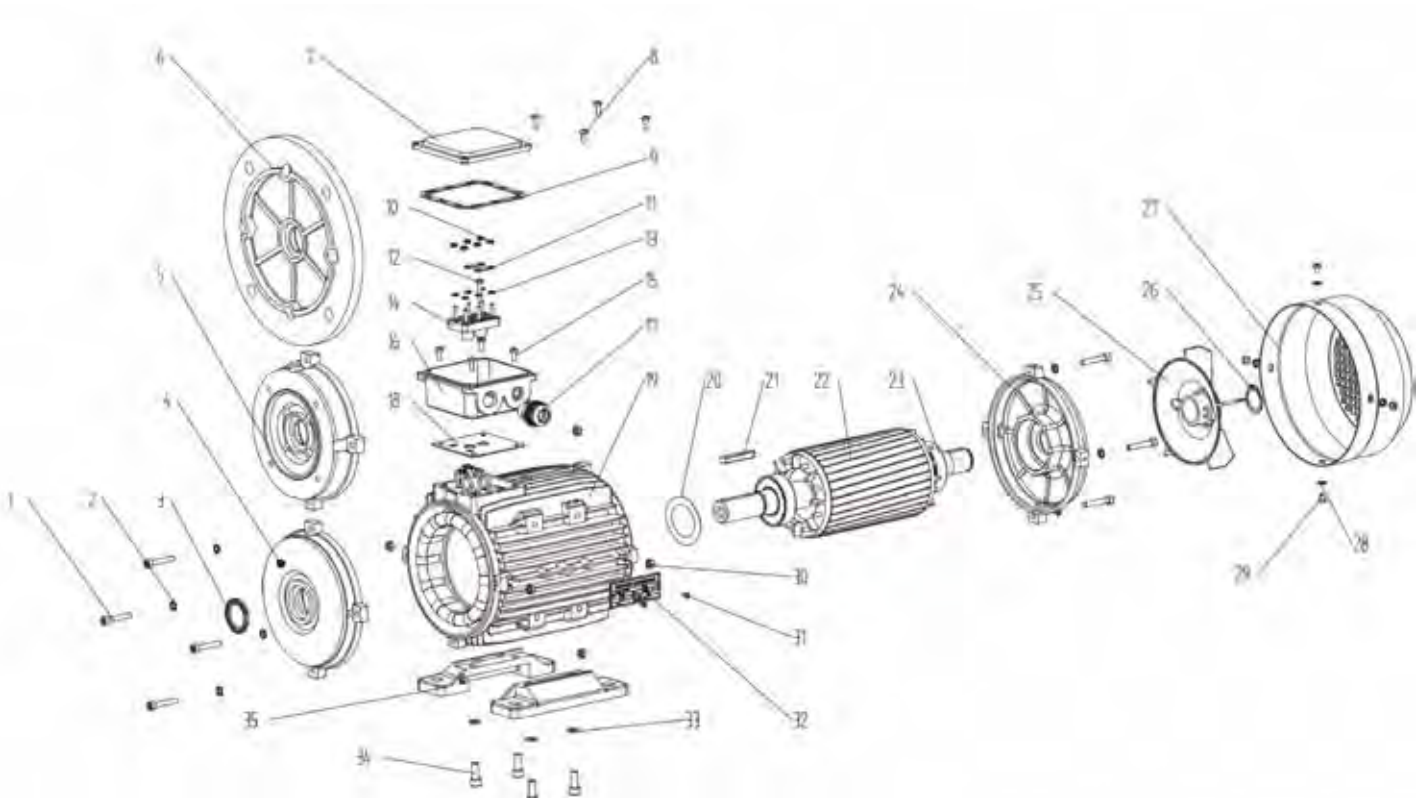
IM B14

Frame size	B3				Shaft					General							
	H	A	B	C	D	E	F	G	K	AA	AD	HD	AC	L	TBS	TBW	TBH
80	80	125	100	50	Ø19	40	6	15.5	Ø9	160	220	140	158	280	16	97	97
90S/L	90	140	100/125	56	Ø24	50	8	20	Ø10	175	240	150	176	312/337	16	97	97
100	100	160	140	63	Ø28	60	8	24	Ø12	200	265	165	199	380	20	118	118
112	112	190	140	70	Ø28	60	8	24	Ø12	230	291	179	220	405	29	118	118
132S/M	132	216	140/178	89	Ø38	80	10	33	Ø12	255	332	200	259	467/505	29	118	118
160ML	160	254	210/254	108	Ø42	110	12	37	Ø15	314	402	242	313	605/650	91	162	187
180ML	180	279	241/279	121	Ø48	110	14	42.5	Ø15	348	439	259	360	687/725	160/180	162	187
200L	200	318	305	133	Ø55	110	16	49	Ø19	388	497	297	399	768	192	186	233

Frame size	B5						B14					
	N	M	P	S	T	R	N	M	P	S	T	R

80	130	165	200	4-Ø12	3.5	0	80	100	120	M6	3	0
90S/L	130	165	200	4-Ø12	3.5	0	95	115	140	M8	3	0
100	180	215	250	4-Ø15	4	0	110	130	160	M8	3.5	0
112	180	215	250	4-Ø15	4	0	110	130	160	M8	3.5	0
132S/M	230	265	300	4-Ø15	4	0	130	165	200	M10	3.5	0
160ML	250	300	350	4-Ø19	5	0						0
180ML	250	300	350	4-Ø19	5	0						0
200L	300	350	400	4-Ø19	5	0						0

38. TA SERIES - Exploded drawing spare part list



- | | | |
|-------------------------------|--------------------------------|-----------------------------|
| 1. Screw | 13. Terminal shim | 25. Cooling fan |
| 2. Gasket | 14. Terminal board | 26. Fan circlip |
| 3. Oil seal | 15. Terminal box fixing screws | 27. Fan cover |
| 4. DE endshield | 16. Terminal box Dase | 28. Fan cover fixing shim |
| 5. B14 nang | 17. Cable gland | 29. Fan cover fixing screws |
| 6. B5 nange | 18. Terminal box bottomgaskel | 30. Endshield fixing nul |
| 7. Terminal box cover | 19. Frame | 31. Rivet |
| 8. Terminal box fixing screws | 20. Preload washer | 32. Nameplate |
| 9. Terminal box upper gasket | 21. Key | 33. Foot fixing nut |
| 10. Terminal box fixing nut | 22. Rotor | 34. Foot fixing screws |
| 11. Terminal bridge | 23. Bearing | 35. Foot |
| 12. Terminal pin | 24. NDE endshield | |