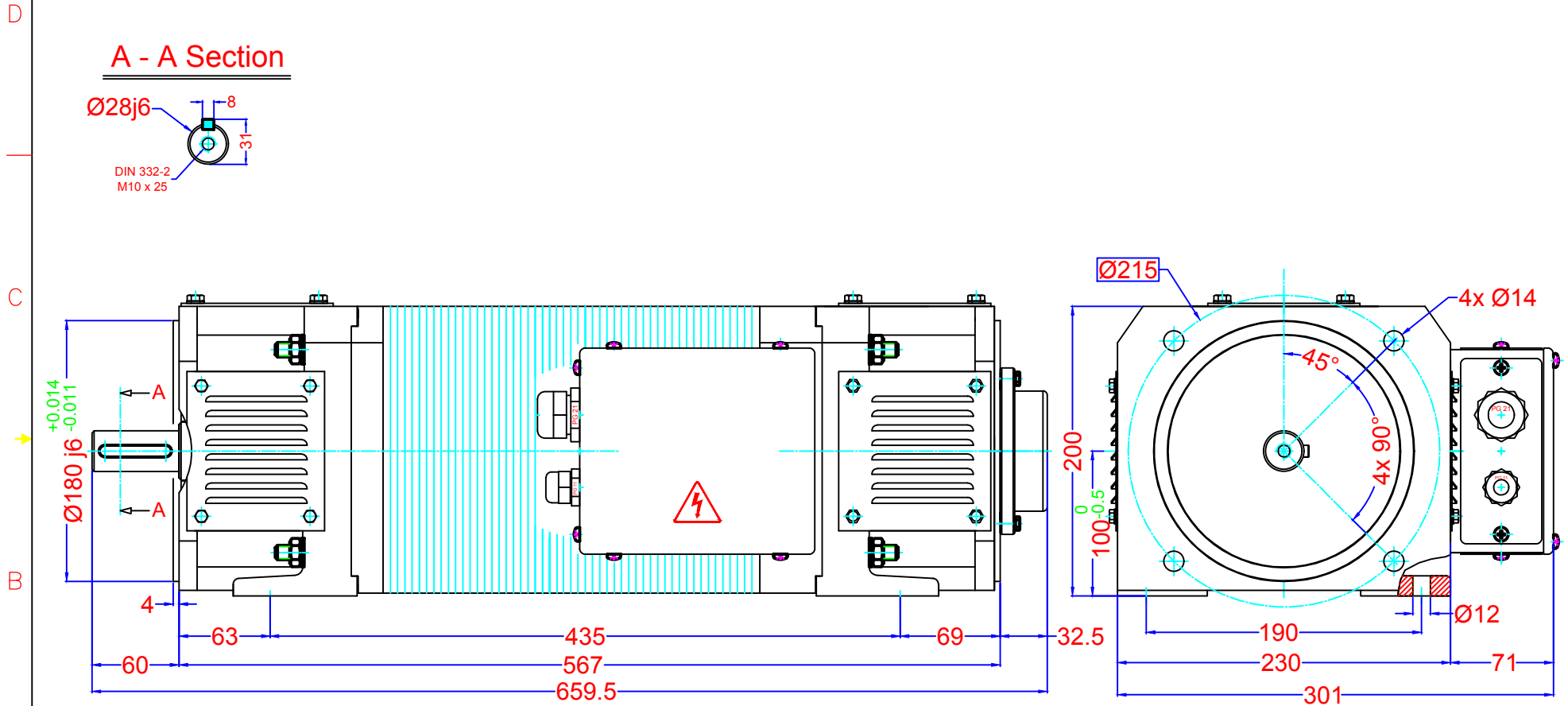
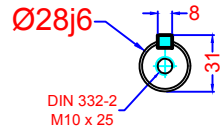


### A - A Section



Part No	5 K 10 26 002 M
Drawing No	5 K 10 26 002 R

Pro. Class	IP 23	Mounting	IM - 2001
Duty	S 2	Cooling	IC 01
Ins. Class	F	Weight	~ 122 Kg.

Output	14	Kw.	3000	r.p.m.
Armature		Excitation		
Voltage	440	V.	Voltage	220 / 110
Current	36	A.	Current	1,8 / 3.6
			A.	

Drawn by	Name	Sign
Checked	Melih	
Confirm	Melih	

**Drivetek as**  
Regulerte motordrifter - www.dtc.no

Rev.No.	Rev.Date	Detail
00		
Revision		

TOLERANCES to DIN ISO 2768 T1 , Coarse ( c )					
0.5 - 3	3 - 6	7 - 30	31 - 120	121 - 315	316 - 1000
± 0,2	± 0,3	± 0,5	± 0,8	± 1,2	± 2

Note : 135°C NC Thermal Switch + Color : Blue