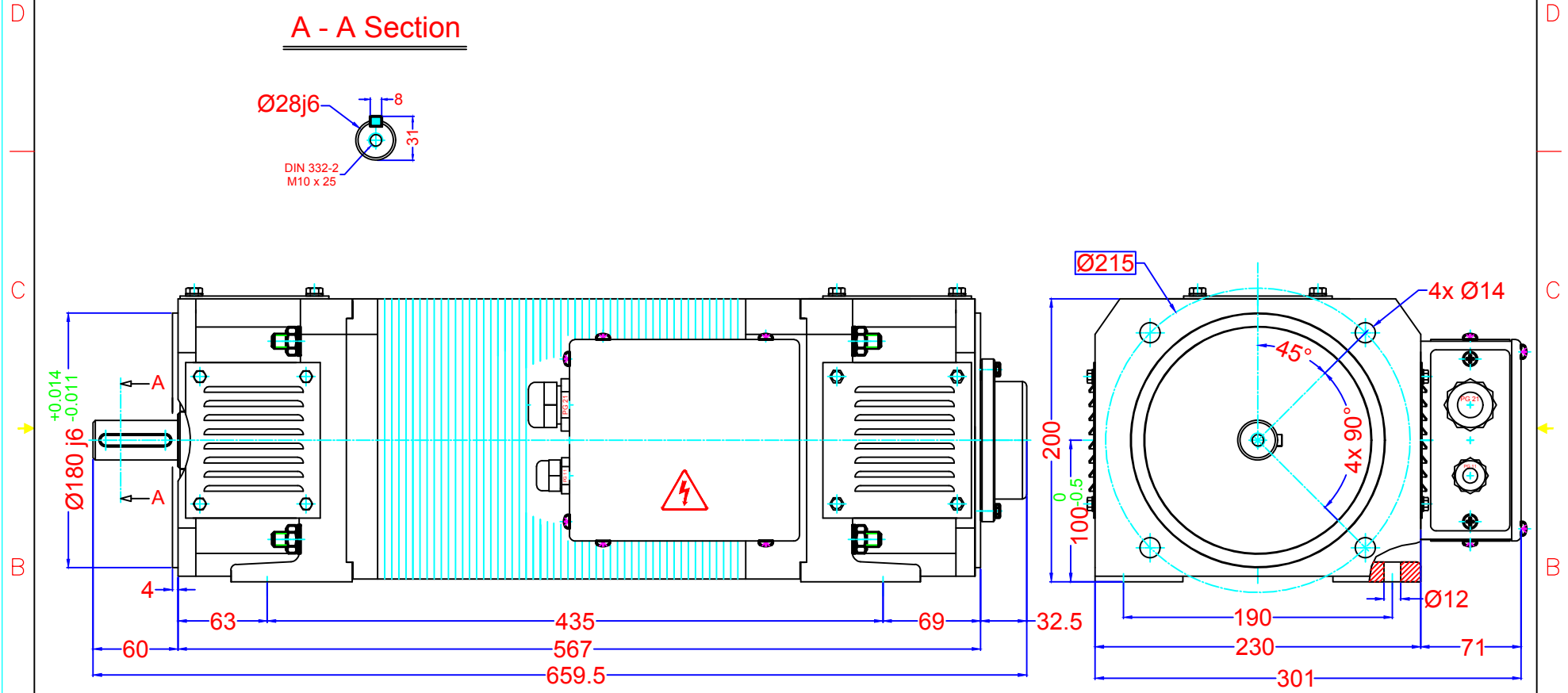
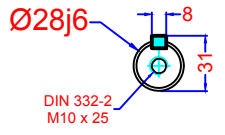


A - A Section



Part No	5 K 10 26 001 M
Drawing No	5 K 10 26 001 R

Pro.Class	IP 23	Mounting	IM - 2001
Duty	S2	Cooling	IC 01
Ins.Class	F	Weight	~ 122 Kg.

Output	7	Kw.	3000	r.p.m.
Armature		Excitation		
Voltage	220	V.	Voltage	220 / 110 V.
Current	36	A.	Current	1,8 / 3,6 A.

Name	Sign
Drawn by	Tank
Checked	Melih
Confirm	Melih

Rev.No.	Rev.Date	Detail
00		

TOLERANCES TO DIN ISO 2768 T1, Coarse (c)					
0.5 - 3	3 - 6	7 - 30	31 - 120	121 - 315	316 - 1000
± 0,2	± 0,3	± 0,5	± 0,8	± 1,2	± 2

Note : 135°C NC Thermal Switch + Color : RAL 5010

