

# Motor 745 IP55 - 746 IP66

D.C. motors CEI and IEC standards - permanent magnet - 4 poles

**S1** CONTINUOUS DUTY

**0,4-1,8kW**

Battery supply - rated voltage 12/24/48V

Form factor 1 - self ventilated

745 protection IP55 - 746 protection IP66 - insulation F / H class

745 terminal box or free cable - 746 only free cable

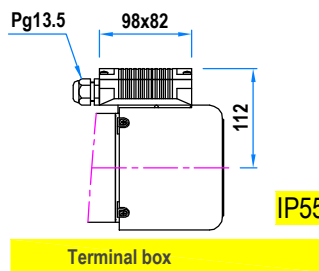
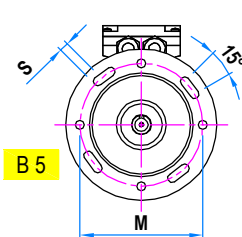
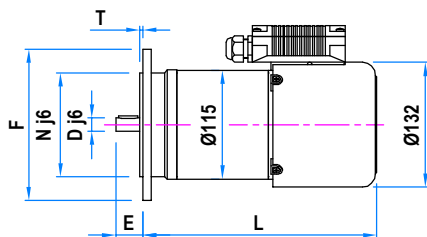
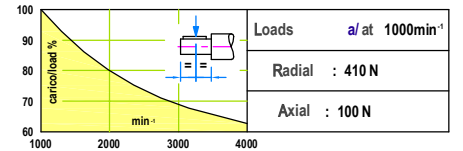
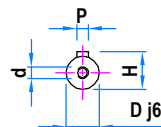
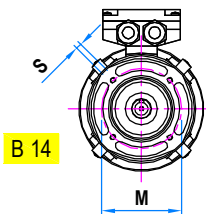
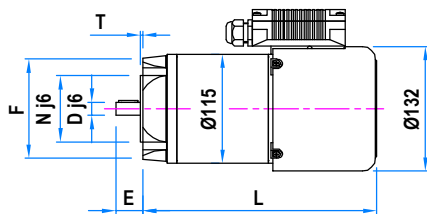


Type	1500min <sup>-1</sup>			2000min <sup>-1</sup>			3000min <sup>-1</sup>		
745-6	0,4 kW	12 V - 40 A	2,6 Nm	0,55 kW	12 V - 58 A	2,6 Nm	0,75 kW	12 V - 80 A	2,3 Nm
746-6		24 V - 20 A			24 V - 29 A			24 V - 40 A	
		48 V - 10 A			48 V - 14,5 A			48 V - 20 A	
745-9	0,55 kW	12 V - 58 A	3,5 Nm	0,75 kW	12 V - 80 A	3,5 Nm	1 kW	12 V - 80 A	2,3 Nm
746-9		24 V - 29 A			24 V - 40 A			24 V - 53,5 A	
		48 V - 14,5 A			48 V - 20 A			48 V - 26,5 A	
745-12	0,75 kW	12 V - 80 A	4,8 Nm	0,75 kW	12 V - 80 A	3,5 Nm	--	--	--
746-12		24 V - 40 A		1 kW	24 V - 53,5 A	4,8 Nm	1,3 kW	24 V - 70 A	4,2 Nm
		48 V - 20 A		--	48 V - 26,5 A	--	--	48 V - 35 A	--
745-18	0,75 kW	12 V - 80 A	4,8 Nm	--	--	--	--	--	--
746-18	1 kW	24 V - 53,5 A	6,4 Nm	1,3 kW	24 V - 70 A	6,4 Nm	1,5 kW	24 V - 80 A	4,8 Nm
		48 V - 26,5 A			48 V - 35 A		1,8 kW	48 V - 48 A	5,7 Nm

Tolerance ±10%

Max. 0,75 kW a / at 12 V

Max. 1,5 kW a / at 24 V



Shafts				
D	E	P	H	d
Ø14	30	5x5x20	16	M5
Ø19	40	6x6x30	21.5	M6

Flanges B14				
F	N	M	T	S
Ø105	Ø70	Ø85	2.5	M6
Ø120	Ø80	Ø100	2.5	M6

Flanges B5				
F	N	M	T	S
Ø160	Ø110	Ø130	3	Ø9.5
Ø200	Ø130	Ø165	3	Ø11

Type	L	Weight
745-6 746-6	248	8 Kg
745-9 746-9	281	10 Kg
745-12 746-12	311	12 Kg
745-18 746-18	371	16 Kg

