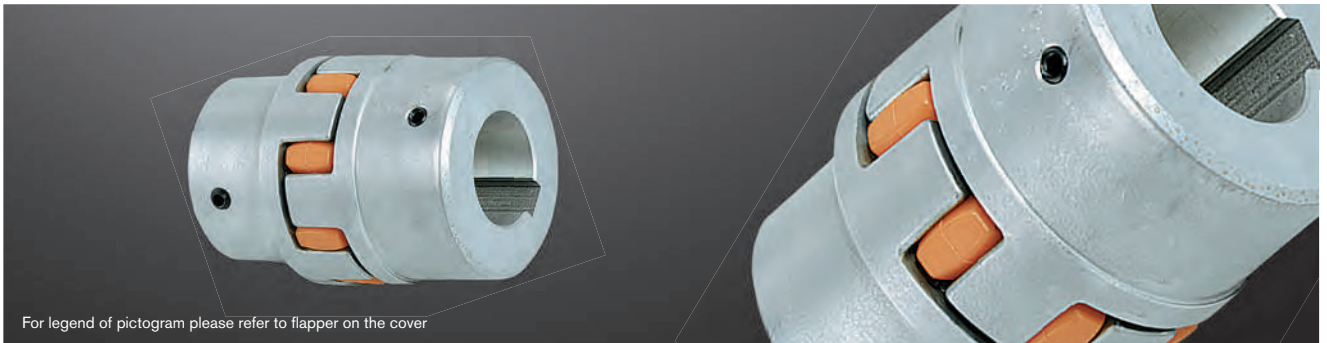
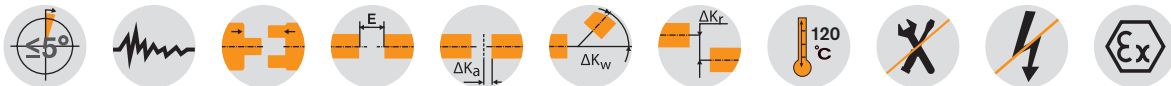


Material aluminium + cast + powder metal



For legend of pictogram please refer to flapper on the cover



ROTEX® Powder metal steel (Sint)																			
Size	Component	Spider ¹⁾ (component 2) Rated torque [Nm]			Finish bore d	Dimensions [mm]													
		92 ShA	98 ShA	64 ShD		General													
					L	l ₁ , l ₂	E	b	s	D _H	d _H	D	N	G	t	T _A [Nm]			
14	1a	7.5	12.5	—	0-16	35	11	13	10	1.5	30	10	30	—	M4	5	1.5		
19	1a	10	17	—	0-24	66	25	16	12	2.0	40	18	40	—	M5	10	2		
24	1a	35	60	—	0-28	78	30	18	14	2.0	56	27	56	—	M5	10	2		

ROTEX® Aluminium diecast (Al-D)																			
Size	Component	Spider ¹⁾ (component 2) Rated torque [Nm]			Finish bore d	Dimensions [mm]													
		92 ShA	98 ShA	64 ShD		General													
					L	l ₁ , l ₂	E	b	s	D _H	d _H	D	N	G	t	T _A [Nm]			
19	1	10	17	—	6-19	66	25	16	12	2	41	18	32	20	M5	10	2		
	19-24				41														
24	1	35	60	—	9-24	78	30	18	14	2	56	27	40	24	M5	10	2		
	22-28				56														
28	1	95	160	—	10-28	90	35	20	15	2.5	66	30	48	28	M8	15	10		
	28-38				66														

ROTEX® Aluminium (Al-H)																			
Size	Component	Spider ¹⁾ (component 2) Rated torque [Nm]			Finish bore d	Dimensions [mm]													
		92 ShA	98 ShA	64 ShD		General													
					L	l ₁ , l ₂	E	b	s	D _H	d _H	D	N	G	t	T _A [Nm]			
5	1a	0.5	0.9	-	0-6	15	5	5	4	0.5	10	-	-	-	M2	2.5	-		
7	1a	1.2	2.0	2.4	0-7	22	7	8	6	1.0	14	-	-	-	M3	3.5	-		
9	1a	3.0	5.0	6.0	0-11	30	10	10	8	1.0	20	7.2	-	-	M4	5	1.5		
12	1a	5.0	9.0	12	0-12	34	11	12	10	1.0	25	8.5	-	-	M4	5	1.5		
14	1a	7.5	12.5	16	0-16	35	11	13	10	1.5	30	10.5	-	-	M4	5	1.5		
19	1a	10	17	26	0-24	66	25	16	12	2.0	40	18	-	-	M5	10	2		
24	1a	35	60	75	0-28	78	30	18	14	2.0	55	27	-	-	M5	10	2		
28	1a	95	160	200	0-38	90	35	20	15	2.5	65	30	-	-	M8	15	10		
38	1a	190	325	405	0-45	114	45	24	18	3.0	80	38	-	-	M8	15	10		
42	1a	265	450	560	0-55	126	50	26	20	3.0	95	46	-	-	M8	20	10		
48	1a	310	525	655	0-62	140	56	28	21	3.0	105	51	-	-	M8	20	10		

The coupling is provided with a ROTEX® GS spider as a standard (ROTEX® standard spider available, if requested).

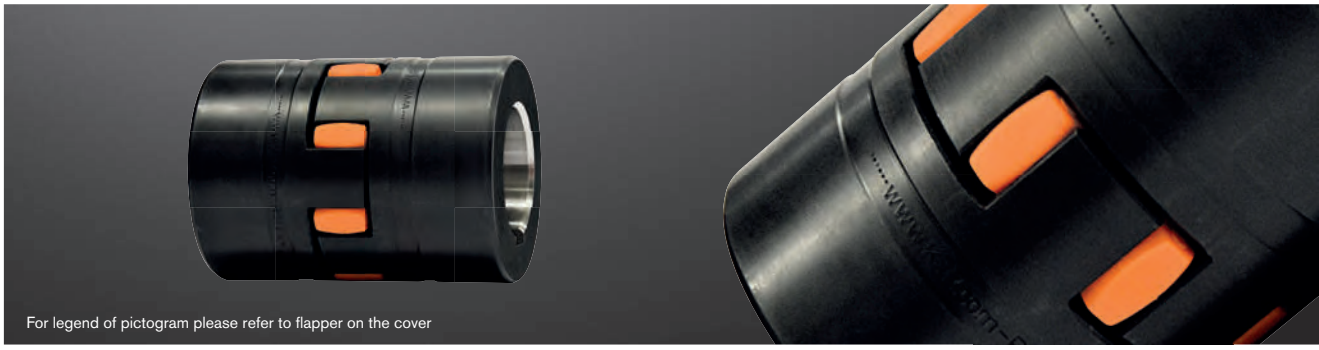
ROTEX® Cast iron (GJL)																			
Size	Component	Spider ¹⁾ (component 2) Rated torque [Nm]			Finish bore d	Dimensions [mm]													
		92 ShA	98 ShA	64 ShD		General													
					L	l ₁ , l ₂	E	b	s	D _H	d _H	D	N	G	t	T _A [Nm]			
38	1	190	325	405	12-40	114	45	24	18	3	80	38	66	37	M8	15	10		
	38-48				78														
42	1a	265	450	560	12-48	126	50	26	20	3	95	46	75	40	M8	20	10		
	14-45				94														
48	1	310	525	655	14-55	176	75	26	20	3	95	46	65	40	M8	20	10		
	15-52				75														
55	1a	410	685	825	48-62	188	80	28	21	3.5	105	51	85	45	M8	20	10		
	15-62				85														
65	1	625	940	1175	20-60	160	65	30	22	4	120	60	98	52	M10	20	17		
	22-70				98														
75	1	1280	1920	2400	55-74	210	85	40	30	5	160	80	118	61	M10	25	17		
	22-70				118														
90	1	2400	3600	4500	30-80	245	100	45	34	5.5	200	100	160	81	M12	30	40		

ROTEX® Nodular iron (GJS)																			
Size	Component	Spider ¹⁾ (component 2) Rated torque [Nm]			Finish bore d	Dimensions [mm]													
		92 ShA	98 ShA	64 ShD		General													
					L	l ₁ , l ₂	E	b	s	D _H	d _H	D	N	G	t	T _A [Nm]			
100	1	3300	4950	6185	50-115	270	110	50	38	6	225	113	180	89	M12	30	40		
110	1	4800	7200	9000	60-125	295	120	55	42	6.5	255	127	200	96	M16	35	80		
125	1	6650	10000	12500	60-145	340	140	60	46	7	290	147	230	112	M16	40	80		
140	1	8550	12800	16000	60-160	375	155	65	50	7.5	320	165	255	124	M20	45	140		
160	1	12800	19200	24000	80-185	425	175	75	57	9	370	190	290	140	M20	50	140		
180	1	18650	28000	35000	85-200	475	195	85	64	10.5	420	220	325	156	M20	50	140		

■ = Unless any material is specified in the order, it is defined with the calculation/order.

¹⁾ Maximum torque of the coupling T_{K max} = rated torque of the coupling T_{K rated} x 2. For selection see page 14 et seqq.

Ordering example:	ROTEX® 38	GJL	92 ShA	1a	Ø 45	1	Ø 25
	Coupling size	Material	Spider hardness	Component	Finish bore	Component	Finish bore



For legend of pictogram please refer to flapper on the cover

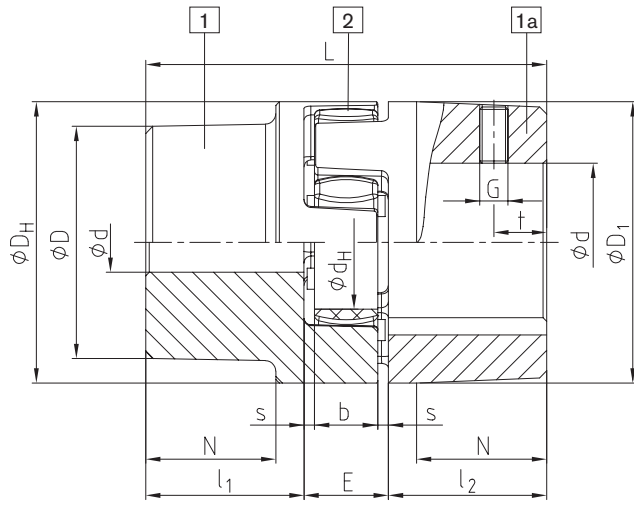


ROTEX® with CDP coating ¹⁾

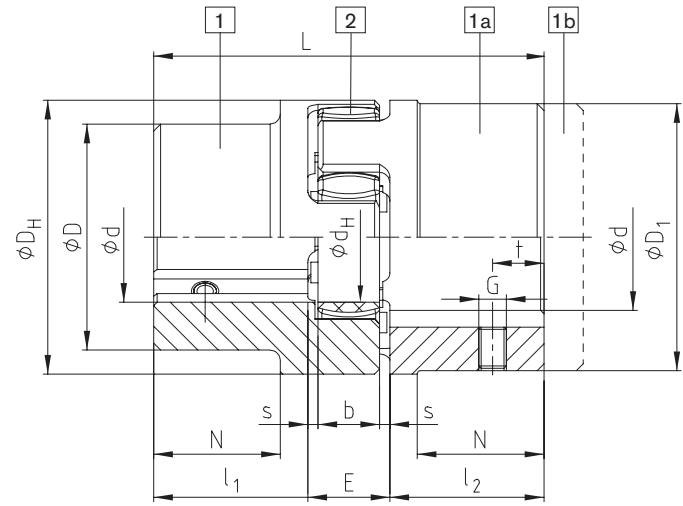
Size	Component	Spider (component 2) Rated torque [Nm]			Finish bore d (min. - max.)	Dimensions [mm]											Setscrew		
		92 ShA	98 ShA	64 ShD		General											G	t	T _A [Nm]
						L	l ₁ , l ₂	E	b	s	D _H	d _H	D	N					
19	1a	10	17	21	0-25	66	25	16	12	2	40	18	40	-	M5	10	2		
24	1a	35	60	75	0-35	78	30	18	14	2	55	27	55	-	M5	10	2		
28	1a	95	160	200	0-40	90	35	20	15	2.5	65	30	65	-	M8	15	10		
38	1	190	325	405	0-48	114	45	24	18	3	80	38	70	27	M8	15	10		
42	1	265	450	560	0-55	126	50	26	20	3	95	46	85	28	M8	20	10		
48	1	310	525	655	0-62	140	56	28	21	3.5	105	51	95	32	M8	20	10		
55	1	410	685	825	0-74	160	65	30	22	4	120	60	110	37	M10	20	17		
65	1	625	940	1175	0-80	185	75	35	26	4.5	135	68	115	47	M10	20	17		
75	1	1280	1920	2400	0-95	210	85	40	30	5	160	80	135	53	M10	25	17		
90	1	2400	3600	4500	0-110	245	100	45	34	5.5	200	100	160	62	M12	25	40		
100	1	3300	4950	6185	0-115	270	110	50	38	6	225	113	180	89	M12	30	40		
110	1	4800	7200	9000	0-125	295	120	55	42	6.5	255	127	200	96	M16	35	80		
125	1	6650	10000	12500	60-145	340	140	60	46	7	290	147	230	112	M16	40	80		

¹⁾ Corrosion protection class acc. to DIN EN ISO 12944: Min. C4, heavy-long

Components



AI-D (thread opposite the keyway)



GJL / GJS (thread on the keyway)

