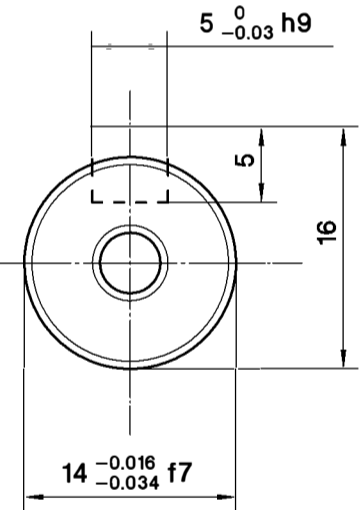
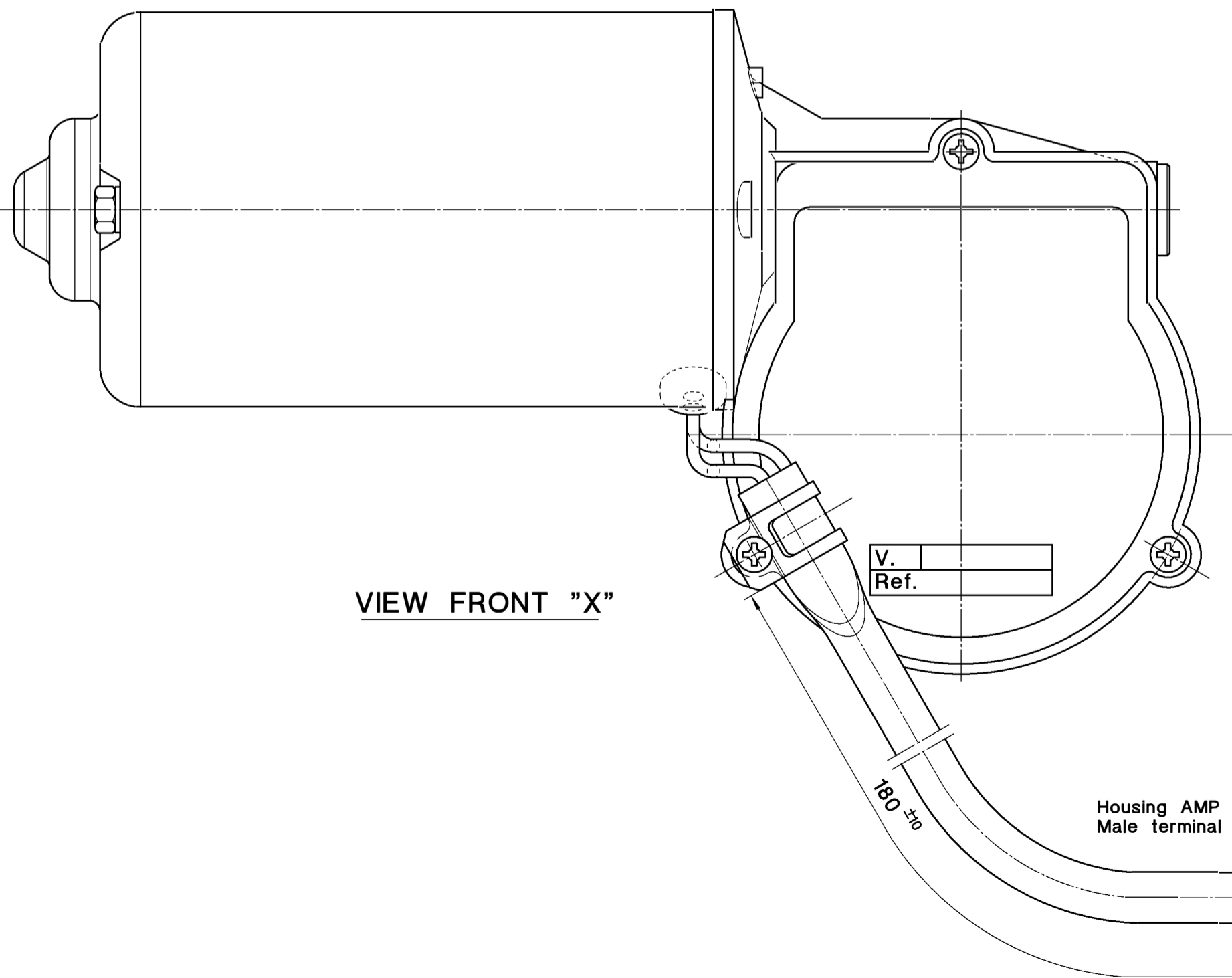
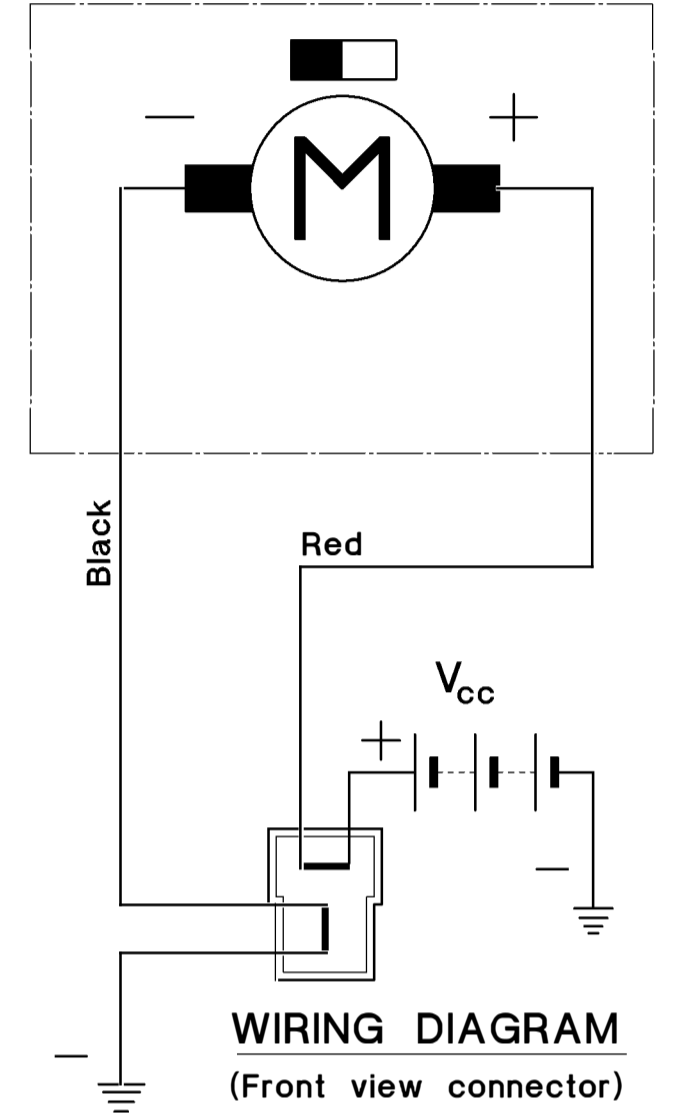
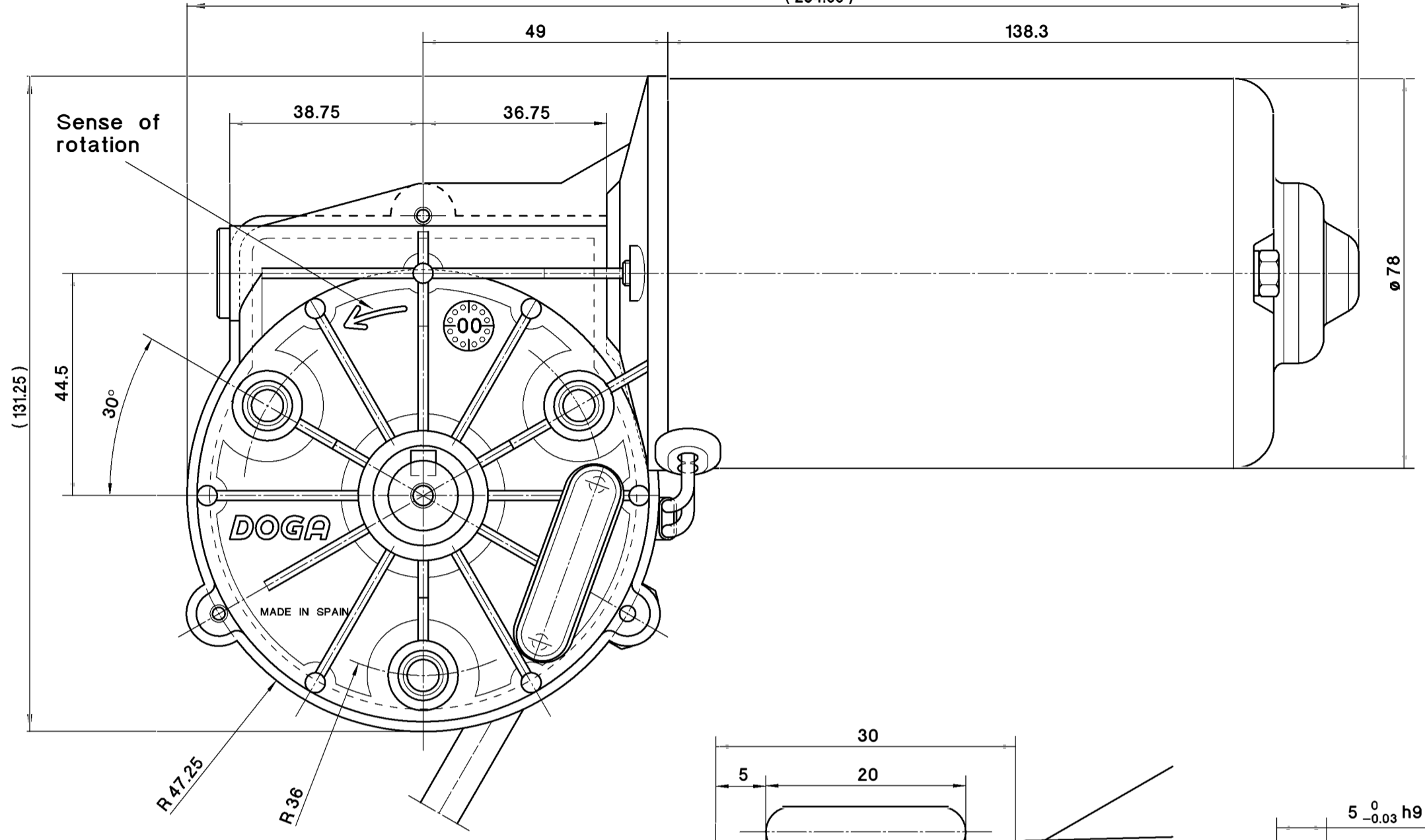
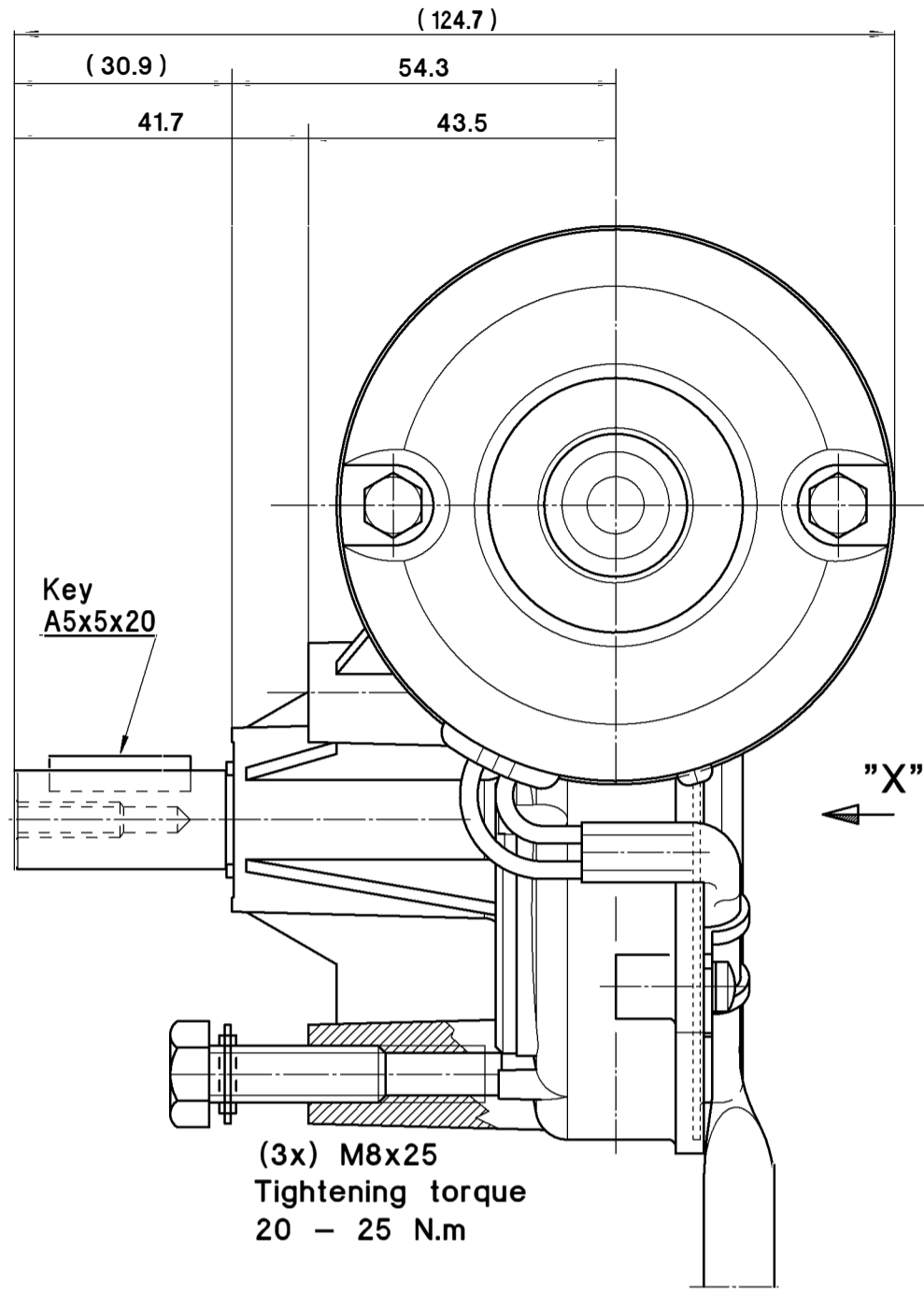


La información consignada en este documento es estrictamente confidencial, y propiedad de DOGA, S.A. Queda estrictamente prohibido cualquier uso no expresamente autorizado. Cualquier negligencia o infracción se resolverá mediante procedimiento legal, a efectos de protección de datos.  
 The information provided in this document is strictly confidential, and property of DOGA, S.A. Any use not specifically authorized is strictly prohibited. Any negligence or infringement will be solved by means of legal procedure, with the object of data protection.

TOLERANCIAS GENERALES GENERAL TOLERANCES		CLIENTE CUSTOMER	
>400	≤1000 ±2	REF. CLIENTE	0.2
>120	≤400 ±1	CUSTOMER REF.	0.1
>30	≤120 ±0.5	VEHICULO	0.2
≤30	±0.3	VEHICLE	±2°

MODIFICACIÓN MODIFICATION	COORD.



MOTOR PERFORMANCE TYPE 258					
NO LOAD PERFORMANCE				Starting torque	Testing voltage
Speed	V	Current	Rpm.		
n1	12	≤ A	±3	80 Nm	13 V
n2		-	-		
n1	24	≤ A	±3	80 Nm	26 V
n2		-	-		

Housing AMP 180.908.0  
 Male terminal 6.35x0.8 AMP 42241-2  
 Plug housing AMP 180.907.0  
 Female terminal 6.35 AMP 6-160448-5

DISEÑADO: O. Oliva MODIFICADO: H.Baudach APROBADO: Released	MATERIAL: - TRATAMIENTO / ACABADO: - SUSTITUYE A: - SUSTITUIDO POR: - DENOMINACIÓN: -	PESO NETO: - NET WEIGHT: - g TREATMENT / FINISH: - REFERENCE: - PART N°: -	ME10 <b>258-901X-_0-00</b> ESCALA: 1:1 SCALE: 1:1
<b>MOTOR 258 ROTATIVO</b> ROTATORY 258 MOTOR			TAMAÑO: A2 HOJA: 1 DE 1 SHEET: 1 OF 1